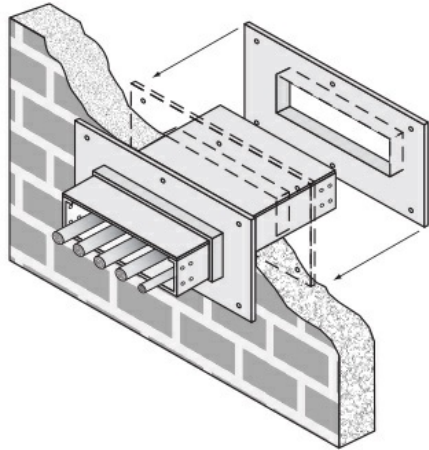




## Cablofil 6H Wall Penetration Sleeve

Part No. P314532



Fabricated cable tray wall sleeves from Legrand, provide safe, rigid and aesthetically pleasing support at a wall requiring cables to continue through the wall. Legrand wall sleeves, WPS, are an economical alternative to the support and finish issues of having cable tray penetrate wall and/or floor. This WPS system provides a rigid support for cable tray. After the sleeve is placed in the wall or floor, the loose collar slides over it. Hardware for the tray connection only is included. Hardware required to mount sleeves to the wall or floor is not included.

### Features & Benefits

Provides a rigid support for cable tray at wall penetrations

Will fit walls up to 8" thick

Bonding jumper or ground wire should be installed through the pan between the aluminum cable trays on each side of the wall sleeve

Overall length of the sleeve is 20"

The opening in the wall should be within 1" of the normal height and width of the cable tray

Two pairs of splice plates and fasteners are included for tray attachment

### Specifications

#### General Info

|              |              |                   |                |
|--------------|--------------|-------------------|----------------|
| Product Line | Cablofil     | Finish            | Pre-Galvanized |
| UPC Number   | 800388204164 | Country Of Origin | Mexico         |

#### Dimensions

|                   |             |                   |           |
|-------------------|-------------|-------------------|-----------|
| Product Width US  | 12.0 in     | Product Weight US | 30.943 lb |
| Product Volume US | 1.667 cu ft | Product Depth US  | 20.0 in   |
| Product Height US | 12.0 in     |                   |           |

#### Buy American Act Compliance

|     |     |
|-----|-----|
| BAA | Yes |
|-----|-----|