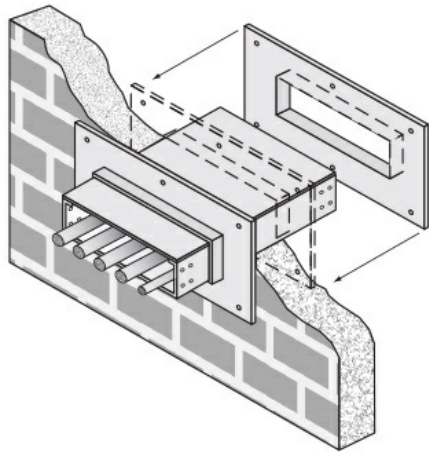




Cablofil
Wall Penetration Sleeve
Part No. P314594



Choose from an extensive selection of metallic ladder tray with a variety of rung and bottom styles to choose from. Finishes include steel, 304L and 316L stainless steel to meet the needs of any application. Rail heights range from 4" to 7" and width sizes are available up to 36".

Features & Benefits

Includes splices and hardware

Specifications

General Info

Product Line	Cablofil	Finish	Hot Dipped
UPC Number	800388204782	Country Of Origin	Mexico

Dimensions

Product Width US	42.0 in	Product Weight US	77.451 lb
Product Volume US	5.833 cu ft	Product Depth US	20.0 in
Product Height US	12.0 in		

Buy American Act Compliance

BAA	Yes
-----	-----