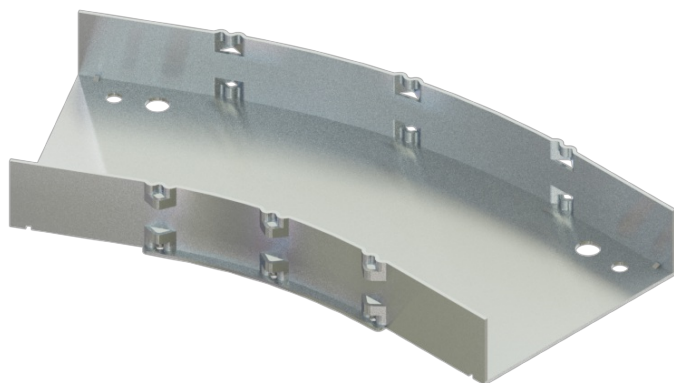




Cablofil
CCS-A-30HB12-04 AL 4W 30 SLD 12R HB
Part No. P400033



Aluminum cable channel is perfect for industrial installations with limited cables. Ribbed Splices are stronger and allow for longer spans. Optional snap in hardware speeds up installation.

Features & Benefits

Strong and easy to install aluminum construction

Specifications

General Info

| | | | |
|--------------------|------------------------|-------------------|----------|
| Product Line | Cablofil | Finish | Aluminum |
| UPC Number | 800388475168 | Country Of Origin | Mexico |
| Application Sector | Commercial, Industrial | | |

Dimensions

| | | | |
|-------------------|---------|-------------------|----------|
| Product Width US | 4.0 in | Product Weight US | 0.897 lb |
| Product Height US | 1.75 in | | |

Trade Programs

| | |
|-----|-----|
| BAA | Yes |
|-----|-----|