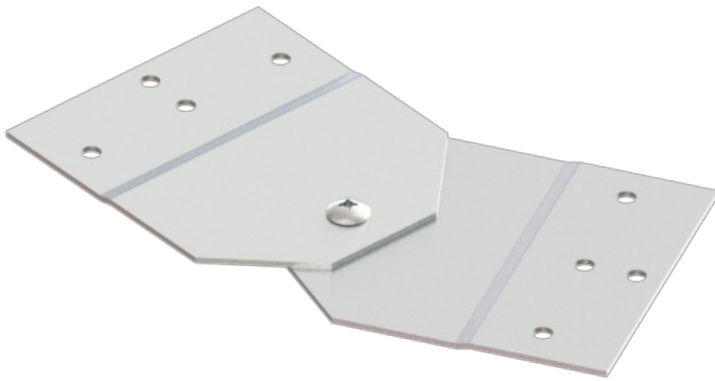




Cablofil  
CC-4A-HASP-S6 4W AL HASP S6 HDW  
Part No. P400250



Aluminum cable channel is perfect for industrial installations with limited cables. Ribbed Splices are stronger and allow for longer spans. Optional snap in hardware speeds up installation.

## Features & Benefits

Strong and easy to install aluminum construction

## Specifications

### General Info

Product Line	Cablofil	Finish	Aluminum
UPC Number	800388477339	Country Of Origin	Mexico

### Dimensions

Product Width US	4.0 in	Product Weight US	0.602 lb
Product Height US	1.75 in		

### Buy American Act Compliance

BAA	Yes
-----	-----