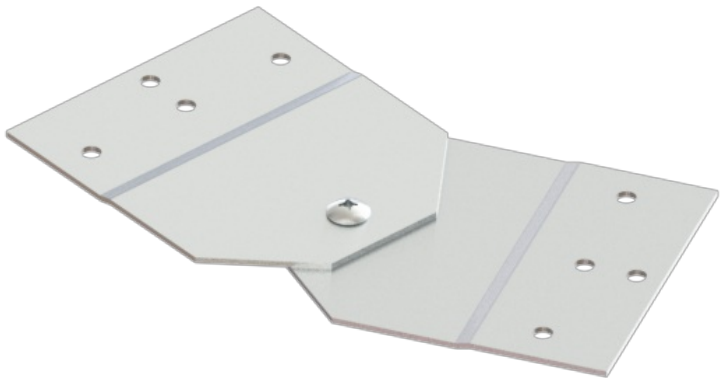




Cablofil
CC-6A-HASP-GE 6W AL HASP GE HDW
Part No. P400253



Aluminum cable channel is perfect for industrial installations with limited cables. Ribbed Splices are stronger and allow for longer spans. Optional snap in hardware speeds up installation.

Features & Benefits

Strong and easy to install aluminum construction

Specifications

General Info

Product Line	Cablofil	Finish	AL
UPC Number	800388477360	Country Of Origin	Mexico

Dimensions

Product Width US	6.0 in	Product Weight US	0.998 lb
Product Height US	1.75 in		

Buy American Act Compliance

BAA	Yes
-----	-----