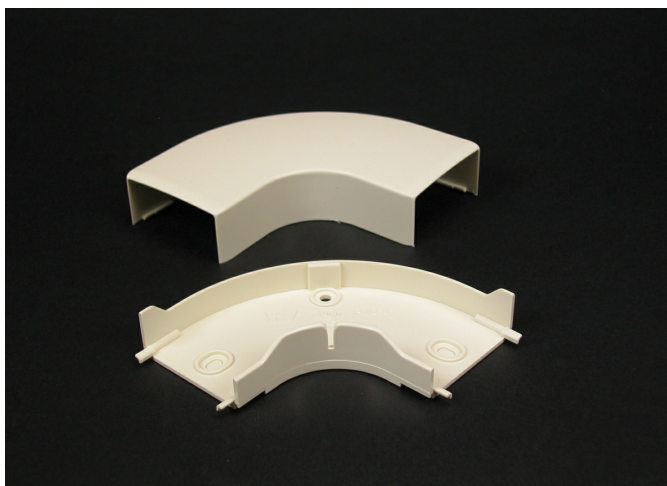




Wiremold  
Eclipse PN03 Flat Elbow Fitting  
Part No. PN03F11WH



For right angle turns on the same surface. 1" (25mm) bend radius.

## Features & Benefits

For right angle turns on the same surface. 1" (25mm) bend radius.

## Specifications

### General Info

Product Line	Wiremold	UPC Number	786776190762
Country Of Origin	United States	Application Sector	Commercial, Residential
Standard	cULus Listed Raceway: File E90378 Guide RJTX. Complies with flammability requirements of UL-5A. Fittings: File E90377 Guide RJYT. Meets Article 388 of NEC. UL Listed for up to 600V. Meets Section 12-2600 of CEC.	Type	Raceway

### Dimensions

Product Weight US	0.147 lb	Product Depth US	1.0 in
Product Length US	2.687 in		

### Listing Agencies / 3rd Party Agencies

cULus ListingNumber	E90377	cULus Listed	Yes
---------------------	--------	--------------	-----

---

Trade Programs

---

USMCA	Yes
-------	-----

---

Additional Information

---

RoHS Compliant	Yes	Product Environmental Profile	Yes
----------------	-----	-------------------------------	-----

---

Technical Information

---

Voltage	600.0 V
---------	---------

---