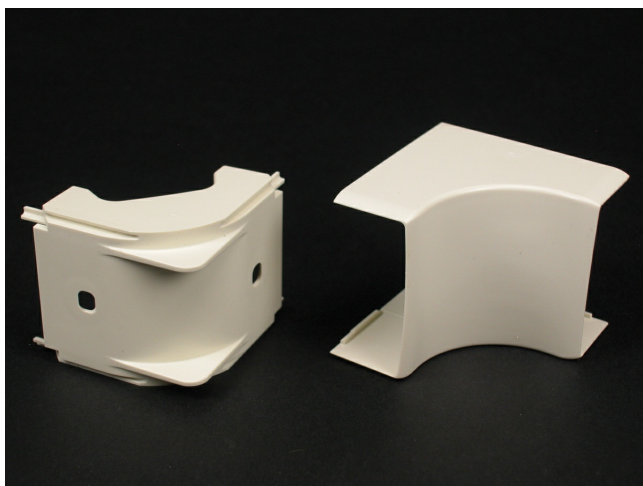




Wiremold
Eclipse PN03 Internal Elbow Fitting
Part No. PN03F17FW



PN3 Series Internal Elbow. For right angle turns around internal corners. 1" (25mm) bend radius.

Features & Benefits

PN3 Series Internal Elbow. For right angle turns around internal corners. 1" (25mm) bend radius.

Specifications

General Info

| | | | |
|-------------------|---------------|--------------------|-------------------------|
| Product Line | Wiremold | UPC Number | 786776190779 |
| Country Of Origin | United States | Application Sector | Commercial, Residential |

| | | | |
|----------|---|------|---------|
| Standard | cULus Listed Raceway: File E90378 Guide RJTX. Complies with flammability requirements of UL-5A. Fittings: File E90377 Guide RJYT. Meets Article 388 of NEC. UL Listed for up to 600V. Meets Section 12-2600 of CEC. | Type | Raceway |
|----------|---|------|---------|

Dimensions

| | | | |
|-------------------|----------|------------------|--------|
| Product Weight US | 0.116 lb | Product Depth US | 1.0 in |
| Product Length US | 2.687 in | | |

Listing Agencies / 3rd Party Agencies

| | | | |
|---------------------|--------|--------------|-----|
| cULus ListingNumber | E90377 | cULus Listed | Yes |
|---------------------|--------|--------------|-----|

Trade Programs

| | |
|-------|-----|
| USMCA | Yes |
|-------|-----|

Additional Information

| | | | |
|----------------|-----|-------------------------------|-----|
| RoHS Compliant | Yes | Product Environmental Profile | Yes |
|----------------|-----|-------------------------------|-----|

Technical Information

| | |
|---------|---------|
| Voltage | 600.0 V |
|---------|---------|
