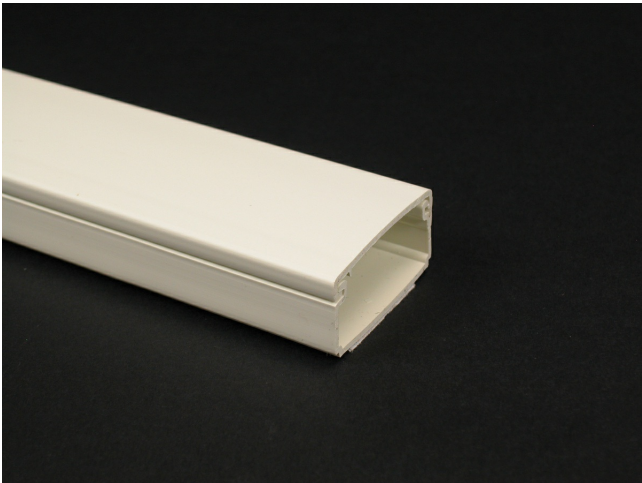




Wiremold  
Eclipse PN03 Latching Raceway Fitting  
Part No. PN03L08FW



PN3 Series One-piece latching raceway with co-extruded hinge and adhesive bakcing. Available in 8' (2.44m) lengths.

Features & Benefits

PN3 Series One-piece latching raceway with co-extruded hinge and adhesive bakcing. Available in 8' (2.44m) lengths.

Specifications

General Info

|                   |   |                    |                         |
|-------------------|---|--------------------|-------------------------|
| Product Line      | Wiremold  | UPC Number         | 786776035247            |
| Country Of Origin | United States   | Application Sector | Commercial, Residential |
| Standard          | cULus Listed Raceway: File E90378 Guide RJTX. Complies with flammability rewuirements of UL-5A. Fittings: File E90377 Guide RJYT. Meets Article 388 of NEC. UL Listed for up to 600V. Meets Section 12-2600 of CEC. | Type               | Raceway                 |

Dimensions

|                   |          |                   |           |
|-------------------|----------|-------------------|-----------|
| Product Width US  | 0.812 in | Product Weight US | 0.089 lb  |
| Product Height US | 0.5 in   | Product Length US | 94.488 in |

Listing Agencies / 3rd Party Agencies

|                     |        |              |     |
|---------------------|--------|--------------|-----|
| cULus ListingNumber | E90378 | cULus Listed | Yes |
|---------------------|--------|--------------|-----|

---

Additional Information

---

|                |     |                               |     |
|----------------|-----|-------------------------------|-----|
| RoHS Compliant | Yes | Product Environmental Profile | Yes |
|----------------|-----|-------------------------------|-----|

---

Technical Information

---

|         |         |
|---------|---------|
| Voltage | 600.0 V |
|---------|---------|

---