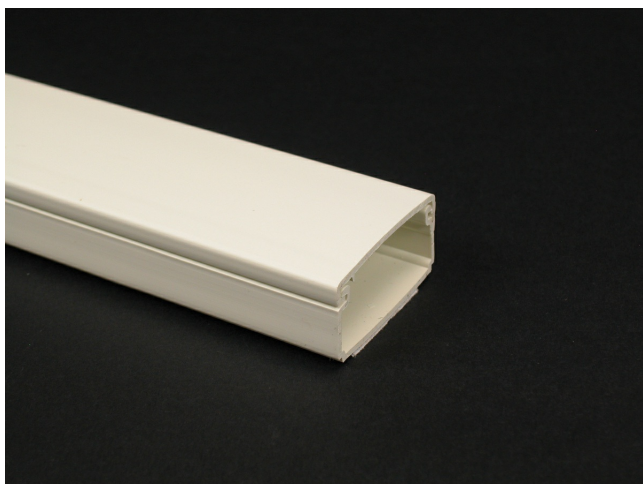




Wiremold
Eclipse PN03 Latching Raceway Fitting
Part No. PN03L08V



PN3 Series One-piece latching raceway with co-extruded hinge and adhesive backing. Available in 8' (2.44m) lengths.

Features & Benefits

This product meets the material restrictions of RoHS

Specifications

General Info

UPC Number	786776015430	Country Of Origin	United States
Product Line	Wiremold	Application Sector	Residential/Commercial
Type	Raceway	Standard	cULus Listed Raceway: File E90378 Guide RJTX. Complies with flammability requirements of UL-5A. Fittings: File E90377 Guide RJYT. Meets Article 388 of NEC. UL Listed for up to 600V. Meets Section 12-2600 of CEC.

Listing Agencies / 3rd Party Agencies

cULus Listed	Yes	cULus ListingNumber	E90378
--------------	-----	---------------------	--------

Buy American Act Compliance

NAFTA	Yes
-------	-----

Additional Information

RoHS Conformant

Yes

Product Environmental Profile Yes

Technical Information

Voltage

600 V
