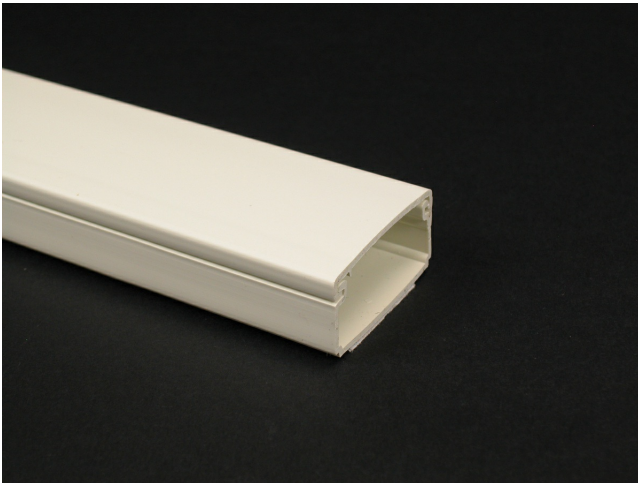




Wiremold  
Eclipse PN03 Latching Raceway Fitting  
Part No. PN03L10-W



PN3 Series One-piece latching raceway with co-extruded hinge and adhesive backing. Available in 10' (3.0m) lengths.

## Features & Benefits

This product meets the material restrictions of RoHS

## Specifications

### General Info

Product Line	Wiremold	UPC Number	786776174779
--------------	----------	------------	--------------

Country Of Origin	United States	Application Sector	Commercial, Residential
-------------------	---------------	--------------------	-------------------------

Standard	cULus Listed Raceway: File E90378 Guide RJTX. Complies with flammability requirements of UL-5A. Fittings: File E90377 Guide RJYT. Meets Article 388 of NEC. UL listed for up to 600V. Meets Section 12-1600 of CEC	Type	Raceway
----------	--	------	---------

### Dimensions

Product Width US	0.812 in	Product Weight US	0.089 lb
------------------	----------	-------------------	----------

Product Height US	0.5 in	Product Length US	118.11 in
-------------------	--------	-------------------	-----------

### Listing Agencies / 3rd Party Agencies

cULus ListingNumber	E90378	cULus Listed	Yes
---------------------	--------	--------------	-----

---

## Additional Information

---

RoHS Compliant

Yes

Product Environmental Profile Yes

---

## Technical Information

---

Voltage

600.0 V

---