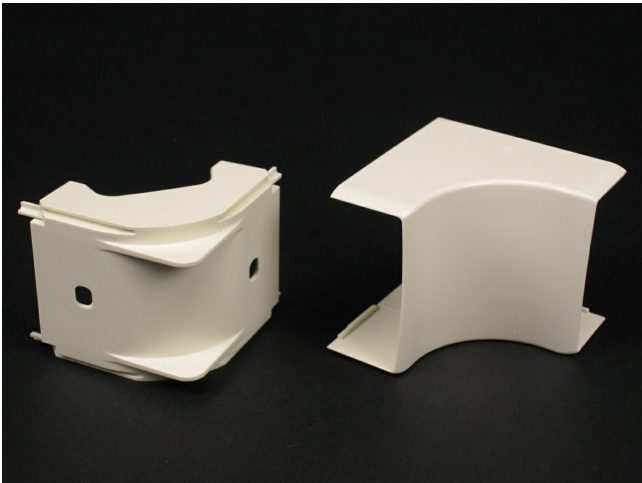




Wiremold  
Eclipse PN05 Internal Elbow Fitting  
Part No. PN05F17FW



PN5 Series Internal Elbow. For right angle turns around internal corners. 1" (25mm) bend radius.

Features & Benefits

PN5 Series Internal Elbow. For right angle turns around internal corners. 1" (25mm) bend radius.

Specifications

General Info

Product Line	Wiremold	UPC Number	786776190892
Country Of Origin	United States	Application Sector	Residential/Commercial
Standard	cULus Listed Raceway: File E90378 Guide RJTX. Complies with flammability rewuirements of UL-5A. Fittings: File E90377 Guide RJYT. Meets Article 388 of NEC. UL Listed for up to 600V. Meets Section 12-2600 of CEC.	Type	Raceway

Dimensions

Product Length US	2.125 in
-------------------	----------

Listing Agencies / 3rd Party Agencies

cULus ListingNumber	E90377	cULus Listed	Yes
---------------------	--------	--------------	-----

Buy American Act Compliance

NAFTA	Yes
-------	-----

Additional Information

RoHS Conformant	Yes	Product Environmental Profile	Yes
-----------------	-----	-------------------------------	-----

Technical Information

Voltage	600.0 V
---------	---------