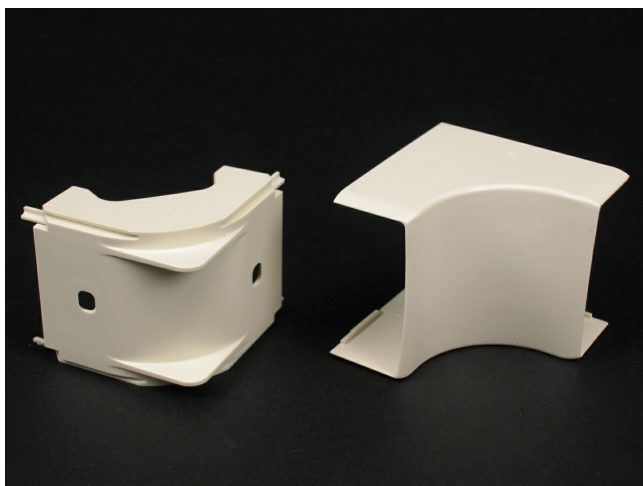




Wiremold
Eclipse PN05 Internal Elbow Fitting
Part No. PN05F17WH



PN5 Series Internal Elbow. For right angle turns around internal corners. 1" (25mm) bend radius.

Features & Benefits

PN5 Series Internal Elbow. For right angle turns around internal corners. 1" (25mm) bend radius.

Specifications

General Info

| | | | |
|-------------------|---|--------------------|-------------------------|
| Product Line | Wiremold | UPC Number | 786776190915 |
| Country Of Origin | United States | Application Sector | Commercial, Residential |
| Standard | cULus Listed Raceway: File E90378 Guide RJTX. Complies with flammability requirements of UL-5A. Fittings: File E90377 Guide RJYT. Meets Article 388 of NEC. UL Listed for up to 600V. Meets Section 12-2600 of CEC. | Type | Raceway |

Dimensions

| | | | |
|-------------------|----------|-------------------|----------|
| Product Weight US | 0.058 lb | Product Length US | 2.125 in |
|-------------------|----------|-------------------|----------|

Listing Agencies / 3rd Party Agencies

| | | | |
|---------------------|--------|--------------|-----|
| cULus ListingNumber | E90377 | cULus Listed | Yes |
|---------------------|--------|--------------|-----|

Additional Information

RoHS Compliant

Yes

Product Environmental Profile Yes

Technical Information

Voltage

600.0 V