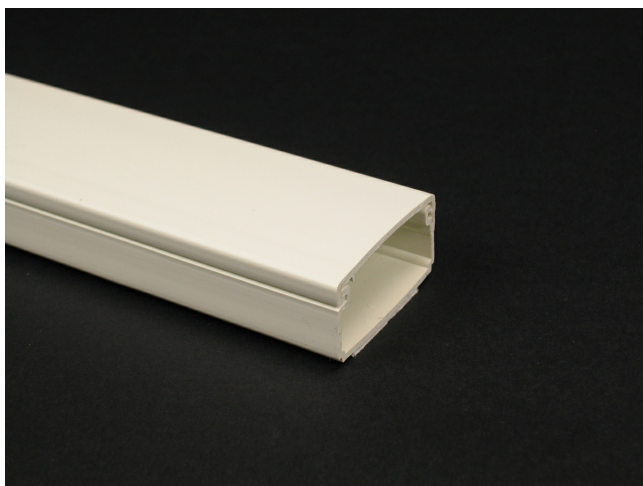




Wiremold
Eclipse PN05 Latching Raceway Fitting
Part No. PN05L10V



PN5 Series One-piece latching raceway with co-extruded hinge and adhesive backing. Available in 10' (3.0m) lengths.

Features & Benefits

This product meets the material restrictions of RoHS

Specifications

General Info

Product Line	Wiremold	UPC Number	786776168884
--------------	----------	------------	--------------

Country Of Origin	United States	Application Sector	Commercial, Residential
-------------------	---------------	--------------------	-------------------------

Standard	cULus Listed Raceway: File E90378 Guide RJTX. Complies with flammability requirements of UL-5A. Fittings: File E90377 Guide RJYT. Meets Article 388 of NEC. UL Listed for up to 600V. Meets Section 12-2600 of CEC.	Type	Raceway
----------	---	------	---------

Dimensions

Product Width US	1.125 in	Product Weight US	0.133 lb
------------------	----------	-------------------	----------

Product Height US	0.625 in	Product Length US	118.11 in
-------------------	----------	-------------------	-----------

Listing Agencies / 3rd Party Agencies

cULus ListingNumber	E90378	cULus Listed	Yes
---------------------	--------	--------------	-----

Trade Programs

USMCA	Yes
-------	-----

Additional Information

RoHS Compliant	Yes	Product Environmental Profile	Yes
----------------	-----	-------------------------------	-----

Technical Information

Voltage	600.0 V
---------	---------
