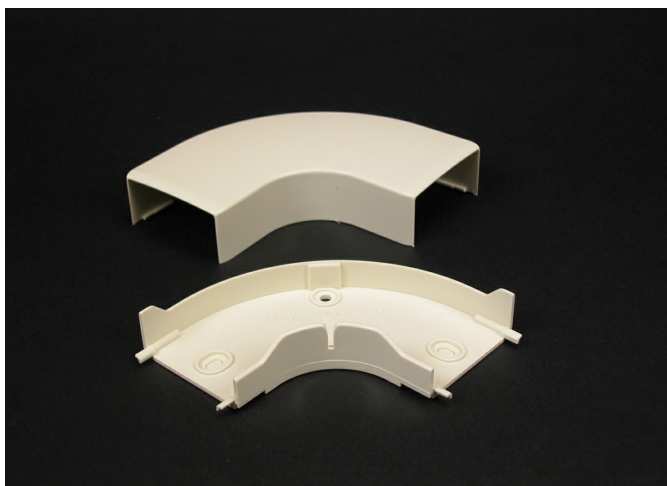




Wiremold
Eclipse PN10 Flat Elbow Fitting
Part No. PN10F11FW



PN10 Series Flat Elbow. For right angle turns on the same surface. 1" (25mm) bend radius.

Features & Benefits

PN10 Series Flat Elbow. For right angle turns on the same surface. 1" (25mm) bend radius.

Specifications

General Info

Product Line	Wiremold	UPC Number	786776190984
Country Of Origin	United States	Application Sector	Commercial, Residential
Standard	cULus Listed Raceway: File E90378 Guide RJTX. Complies with flammability requirements of UL-5A. Fittings: File E90377 Guide RJYT. Meets Article 388 of NEC. UL Listed for up to 600V. Meets Section 12-2600 of CEC.	Type	Raceway

Dimensions

Product Weight US	0.104 lb	Product Length US	1.687 in
-------------------	----------	-------------------	----------

Listing Agencies / 3rd Party Agencies

cULus ListingNumber	E90377	cULus Listed	Yes
---------------------	--------	--------------	-----

Trade Programs

USMCA	Yes
-------	-----

Additional Information

RoHS Compliant	Yes	Product Environmental Profile	Yes
----------------	-----	-------------------------------	-----

Technical Information

Voltage	600.0 V
---------	---------