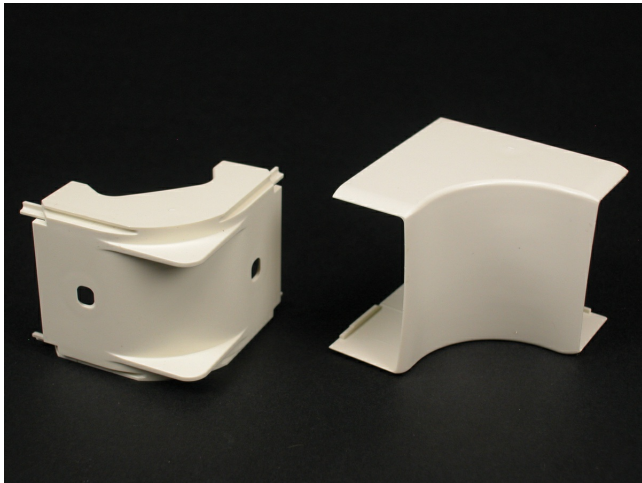




Wiremold  
Eclipse PN10 Internal Elbow Fitting  
Part No. PN10F17FW



PN10 Series Internal Elbow. For right angle turns around internal corners. 1" (25mm) bend radius.

## Features & Benefits

PN10 Series Internal Elbow. For right angle turns around internal corners. 1" (25mm) bend radius.

## Specifications

### General Info

Product Line	Wiremold	UPC Number	786776191011
Country Of Origin	United States	Application Sector	Residential/Commercial
Standard	cULus Listed Raceway: File E90378 Guide RJTX. Complies with flammability rewuirements of UL-5A. Fittings: File E90377 Guide RJYT. Meets Article 388 of NEC. UL Listed for up to 600V. Meets Section 12-2600 of CEC.	Type	Raceway

### Dimensions

Product Length US 2.125 in

### Listing Agencies / 3rd Party Agencies

cULus ListingNumber	E90377	cULus Listed	Yes
---------------------	--------	--------------	-----

### Buy American Act Compliance

NAFTA	Yes
-------	-----

Additional Information

RoHS Conformant	Yes	Product Environmental Profile	Yes
-----------------	-----	-------------------------------	-----

Technical Information

Voltage	600.0 V
---------	---------