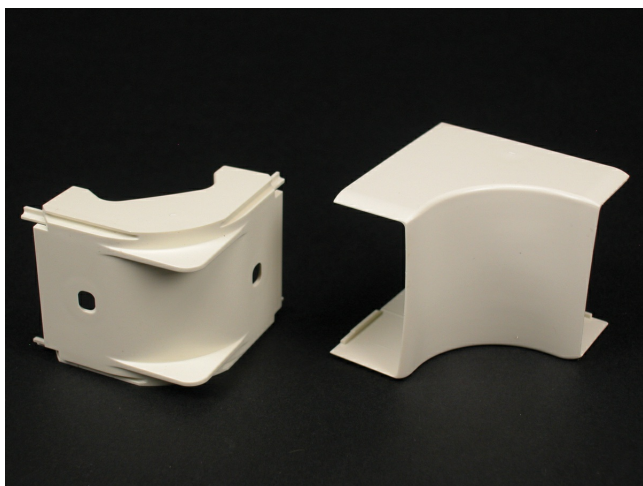




Wiremold
Eclipse PN10 Internal Elbow Fitting
Part No. PN10F17FW



PN10 Series Internal Elbow. For right angle turns around internal corners. 1" (25mm) bend radius.

Features & Benefits

PN10 Series Internal Elbow. For right angle turns around internal corners. 1" (25mm) bend radius.

Specifications

General Info

Product Line	Wiremold	UPC Number	786776191011
Country Of Origin	United States	Application Sector	Commercial, Residential
Standard	cULus Listed Raceway: File E90378 Guide RJTX. Complies with flammability requirements of UL-5A. Fittings: File E90377 Guide RJYT. Meets Article 388 of NEC. UL Listed for up to 600V. Meets Section 12-2600 of CEC.	Type	Raceway

Dimensions

Product Weight US	0.073 lb	Product Length US	2.125 in
-------------------	----------	-------------------	----------

Listing Agencies / 3rd Party Agencies

cULus ListingNumber	E90377	cULus Listed	Yes
---------------------	--------	--------------	-----

Additional Information

RoHS Compliant

Yes

Product Environmental Profile Yes

Technical Information

Voltage

600.0 V