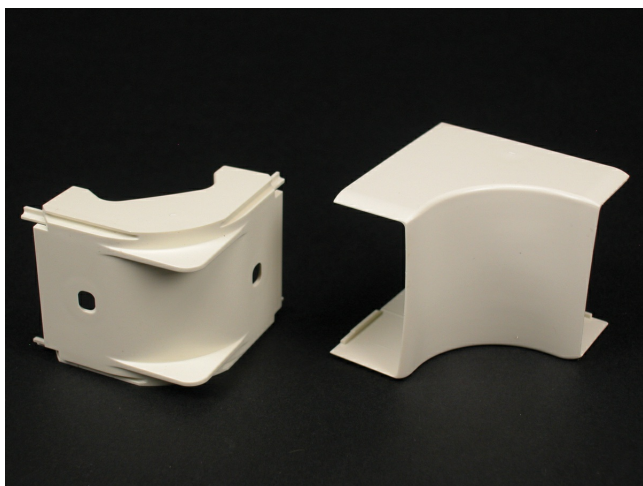




Wiremold  
Eclipse PN10 Internal Elbow Fitting  
Part No. PN10F17V



PN10 Series Internal Elbow. For right angle turns around internal corners. 1" (25mm) bend radius.

## Features & Benefits

PN10 Series Internal Elbow. For right angle turns around internal corners. 1" (25mm) bend radius.

## Specifications

### General Info

Product Line	Wiremold	UPC Number	786776191028
Country Of Origin	United States	Application Sector	Commercial, Residential

Standard	cULus Listed Raceway: File E90378 Guide RJTX. Complies with flammability requirements of UL-5A. Fittings: File E90377 Guide RJYT. Meets Article 388 of NEC. UL Listed for up to 600V. Meets Section 12-2600 of CEC.	Type	Raceway
----------	---	------	---------

### Dimensions

Product Weight US	0.073 lb	Product Length US	2.125 in
-------------------	----------	-------------------	----------

### Listing Agencies / 3rd Party Agencies

cULus ListingNumber	E90377	cULus Listed	Yes
---------------------	--------	--------------	-----

### Trade Programs

USMCA	Yes
-------	-----

Additional Information

RoHS Compliant	Yes	Product Environmental Profile	Yes
----------------	-----	-------------------------------	-----

Technical Information

Voltage	600.0 V
---------	---------