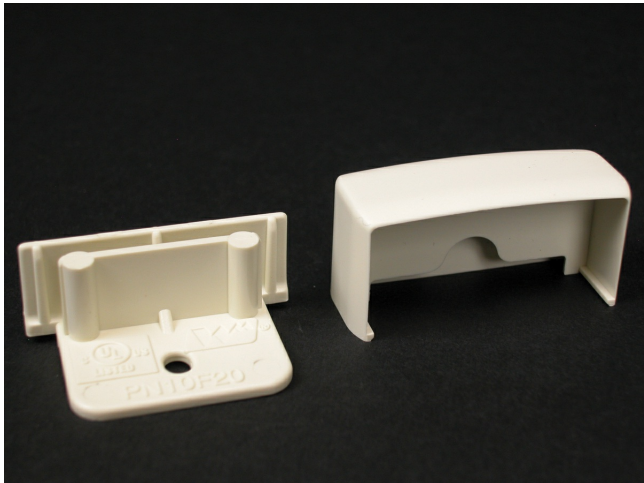




Wiremold
Eclipse PN10 Blank End Fitting
Part No. PN10F20FW



PN10 Series For closing open end of raceway.

Features & Benefits

PN10 Series For closing open end of raceway.

Specifications

General Info

| | | | |
|-------------------|---|--------------------|----------------------------|
| Product Line | Wiremold | UPC Number | 786776191042 |
| Country Of Origin | United States | Application Sector | Commercial, Residential |
| Standard | cULus Listed Raceway: File E90378 Guide RJTX. Complies with flammability requirements of UL-5A. Fittings: File E90377 Guide RJYT. Meets Article 388 of NEC. UL Listed for up to 600V. Meets Section 12-2600 of CEC. | Type | Raceway |

Dimensions

| | | | |
|-------------------|----------|------------------|----------|
| Product Weight US | 0.009 lb | Product Depth US | 0.687 in |
|-------------------|----------|------------------|----------|

Listing Agencies / 3rd Party Agencies

| | | | |
|---------------------|--------|--------------|-----|
| cULus ListingNumber | E90377 | cULus Listed | Yes |
|---------------------|--------|--------------|-----|

Additional Information

RoHS Compliant

Yes

Product Environmental Profile Yes

Technical Information

Voltage

600.0 V