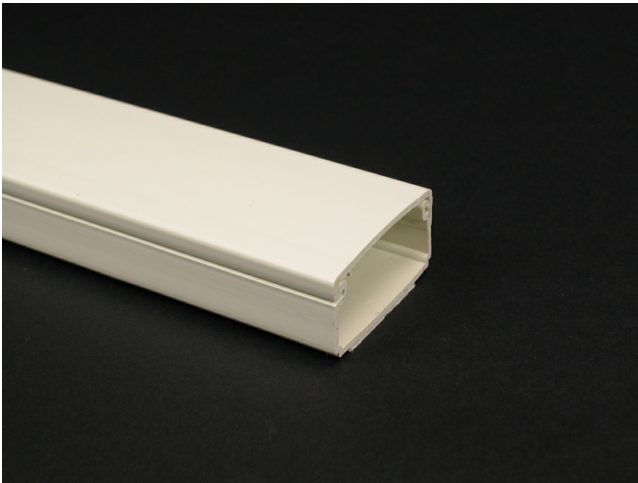




Wiremold
Eclipse PN10 Latching Raceway Fitting
Part No. PN10L08FW



PN10 Series One-piece latching raceway with co-extruded hinge and adhesive backing. Available in 8' (2.44m) lengths.

Features & Benefits

PN10 Series One-piece latching raceway with co-extruded hinge and adhesive backing. Available in 8' (2.44m) lengths.

Specifications

General Info

Product Line	Wiremold	UPC Number	786776035438
Country Of Origin	United States	Application Sector	Commercial, Residential

Standard	cULus Listed Raceway: File E90378 Guide RJTX. Complies with flammability requirements of UL-5A. Fittings: File E90377 Guide RJYT. Meets Article 388 of NEC. UL Listed for up to 600V. Meets Section 12-2600 of CEC.	Type	Raceway
----------	---	------	---------

Dimensions

Product Width US	1.687 in	Product Weight US	0.212 lb
Product Height US	0.8125 in	Product Length US	96.06 in

Listing Agencies / 3rd Party Agencies

cULus ListingNumber	E90378	cULus Listed	Yes
---------------------	--------	--------------	-----

Additional Information

RoHS Compliant

Yes

Product Environmental Profile Yes

Technical Information

Voltage

600.0 V
