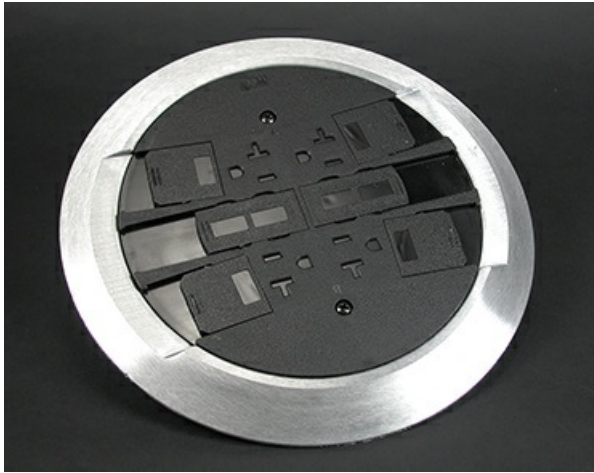




Wiremold
RC4 Multi-Service Poke-Thru Finish Flange and Slide Holder Assembly
Part No. RC4CTCAA



Flush Style Poke-Thru Devices are an excellent solution for bringing power, communication, and A/V services to the workstation in an open space, above-grade floor environment. All Wiremold Flush Style Poke-Thru Devices come with built-in TopGuard™ protection, an industry-leading design that meets and exceeds UL scrub water exclusion requirements for tile and carpet floors. Topguard protection prevents water, dirt, or debris from entering not just the power devices, but also the communication devices. All Wiremold Flush Style Poke-Thru Devices can be installed on tile, carpet, or wood covered floors. Each of these devices provides an excellent solution for both new or retrofit construction, with typical applications that include office buildings, airports, malls, shopping centers, libraries, and schools.

Features & Benefits

Flange available in painted gray (GY), black (BK), ivory (VY), or brushed metal finished in aluminum (AL), and brass (BS) . Slide covers match the painted flange colors, gray, black, and ivory. Aluminum and brass flanges shipped with black slide cover. Brass flange also available with nonmetallic brass colored slide holder (AB). Aluminum flange also available with nonmetallic aluminum colored slide holder (AA). Includes Wiremold Open System unloaded adapters to accept four discrete keystone connectors from most manufacturers. Unit also includes Ortronics TracJack Mounting adapters and Ortronics Series II Communication Housing. Modular jacks sold separately. NOTE: Assembled with scrub water gasket. For use on tile or carpet floors. RC4 Series Poke-Thru Devices require a 4" (102mm) diameter hole. Not designed to work with bare concrete or terrazzo. Floor covering thickness 1/8" minimum.

Specifications

General Info

| | | | |
|---------------------------------------|------------|--------------|---|
| Product Line | Wiremold | UPC Number | 786564054887 |
| Country Of Origin | Mexico | Construction | Unassembled |
| Application Sector | Commercial | Standard | cULus Listed Metallic Outlet Boxes: File E2961 Guide QCIT. cULus Listed Nonmetallic Outlet Boxes & Fittings Classified for Fire Resistance: File R8209 Guide CEYY. Meets Article 300.21, 300.22[C] &314 of NEC. |
| Type | Poke-Thru | | |
| Listing Agencies / 3rd Party Agencies | | | |
| cULus ListingNumber | E2961 | cULus Listed | Yes |

Additional Information

RoHS Conformant

Yes

Technical Information

Number of Outlets

2
