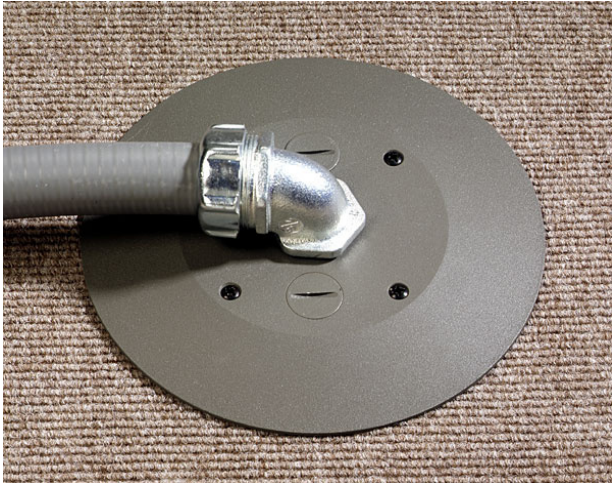




Wiremold  
P-THRU ASSY FLUSH FURN FEED-AL/LJB  
Part No. RC7AFFTCAL-LJB



Flush Style Poke-Thru Devices are an excellent solution for bringing power, communication, and A/V services to the workstation in an open space, above-grade floor environment. All Wiremold Flush Style Poke-Thru Devices come with built-in TopGuard™ protection, an industry-leading design that meets and exceeds UL scrub water exclusion requirements for tile and carpet floors. Topguard protection prevents water, dirt, or debris from entering not just the power devices, but also the communication devices. All Wiremold Flush Style Poke-Thru Devices can be installed on tile, carpet, or wood covered floors. Each of these devices provides an excellent solution for both new or retrofit construction, with typical applications that include office buildings, airports, malls, shopping centers, libraries, and schools.

## Features & Benefits

Complete with one-piece finish flange and conduit assembly with one 3/4" and two 1/2" trade size conduit adapters and closure plugs. Colors available in painted gray (GY), painted black (BK), brushed aluminum (AL), and plated brass (BS).  
NOTE: Assembled with scrub water gasket. For use on tile or carpet floors. RC7AFFTC Series Poke-Thru Devices require a 3 1/16" (78mm) diameter hole. Not designed to work with bare concrete or terrazzo. Floor covering thickness 1/8" minimum.

## Specifications

### General Info

Product Line	Wiremold	UPC Number	786564151623
Country Of Origin	Mexico	Construction	Assembled
Number of Knockouts	2	Application Sector	Commercial
Standard	cULus Listed Metallic Outlet Boxes: File E2961 Guide QCIT, cULus Listed Nonmetallic Outlet Boxes & Fittings Classified for Fire Resistance: File R8209 Guide CEYY Meets Article 300.21 300.22[C] & 314 of NEC	Type	Poke-Thru

### Listing Agencies / 3rd Party Agencies

cULus ListingNumber	E2961	cULus Listed	Yes
---------------------	-------	--------------	-----

### Additional Information

RoHS Conformant	Yes	Product Environmental Profile	Yes
-----------------	-----	-------------------------------	-----

---

Technical Information

---

Cable Entry	CONDUIT
-------------	---------

---