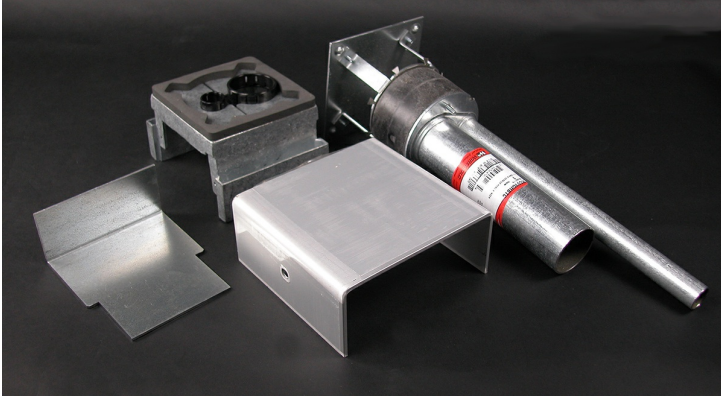




**Wiremold**  
**RC91GHBTC Series Poke-Thru Insert With Single-Width Service Head**  
 Part No. RC91GHBTC



Includes insert stem with disposable plate and two-gang service head with housing, base, scrub water gasket, and barrier. Service head and insert install together to make a poke-thru assembly. Combine with faceplates (sold separately) to complete service head assembly. Shown assembled. Service head is shipped unassembled with the insert stem. NOTE: Assembled with scrub water gasket. For use on tile or carpet floors. Requires a minimum 3 1/16" (78mm) diameter hole.

## Specifications

### General Info

|              |   |                     |                        |
|--------------|---|---------------------|------------------------|
| UPC Number   | 786564021674  | Country Of Origin   | Mexico                 |
| Product Line | Wiremold  | Application Sector  | Residential/Commercial |
| Type         | Poke-Thru   | Construction        | Assembled              |
| Standard     | cULus Listed Metallic Outlet Boxes: File E2961 Guide QCIT.<br>cULus Listed Nonmetallic Outlet Boxes & Fittings Classified for Fire Resistance: File R8209 Guide CEYY. Meets Article 300.21, 300.22[C] & 314 of NEC. | Number of Knockouts | 2                      |

### Dimensions

|                |            |
|----------------|------------|
| Cubic Capacity | 24.5 cu in |
|----------------|------------|

### Listing Agencies / 3rd Party Agencies

|              |     |                     |       |
|--------------|-----|---------------------|-------|
| cULus Listed | Yes | cULus ListingNumber | E2961 |
|--------------|-----|---------------------|-------|

### Buy American Act Compliance

|       |     |
|-------|-----|
| NAFTA | Yes |
|-------|-----|

### Additional Information

|                 |     |                               |     |
|-----------------|-----|-------------------------------|-----|
| RoHS Conformant | Yes | Product Environmental Profile | Yes |
|-----------------|-----|-------------------------------|-----|