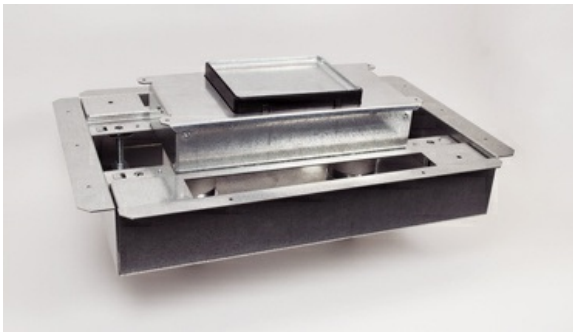




Wiremold  
**Discontinued - RFB2S-FC Resource RFB Series Fire Classified 2-Gang Floor Box**  
Part No. RFB2S-FC



Fire Classified 2-Compartment Box. For use in either concrete or wood floors. Fully adjustable with tunnel compartment. Supplied with one (1) duplex receptacle mounting plate, and one (1) communication mounting plate (RFB22AB). Other device plates sold separately. NOTE: For use in light weight concrete floors with a minimum pour depth of 3 1/4" (83mm) over the crest of the deck. Floor Box spacing 2' on center and one for every 4 square feet in a span. Four (4) #12 AWG Type THHN Power Conductors or 48 #23 AWG (6 Cat. 6) Tele Data Conductors per gang. This box preserves the 2-hour fire rating of floors in which it is installed.

## Features & Benefits

Fire Classified 2-Compartment Box. For use in either concrete or wood floors. Fully adjustable with tunnel compartment. Supplied with one (1) duplex receptacle mounting plate, and one (1) communication mounting plate (RFB22AB). Other device plates sold separately. NOTE: For use in light weight concrete floors with a minimum pour depth of 3 1/4" (83mm) over the crest of the deck. Floor Box spacing 2' on center and one for every 4 square feet in a span. Four (4) #12 AWG Type THHN Power Conductors or 48 #23 AWG (6 Cat. 6) Tele Data Conductors per gang. This box preserves the 2-hour fire rating of floors in which it is installed.

## Specifications

### General Info

Product Line	Wiremold	UPC Number	786776183139
Country Of Origin	United States	Construction	Assembled
Application Sector	Commercial	Standard	cULus Listed Metallic Outlet Boxes: File E2961 Guide QCIT Meets Article 314.27(C) of NEC.
Type	Floor Box		

### Dimensions

Cubic Capacity	100.4 cu in
----------------	-------------

### Listing Agencies / 3rd Party Agencies

cULus ListingNumber	E2961	cULus Listed	Yes
---------------------	-------	--------------	-----

### Buy American Act Compliance

NAFTA	Yes
-------	-----

---

Additional Information

---

RoHS Conformant	Yes
-----------------	-----

---

Technical Information

---

Cable Entry	conduit Feed Channels	Number of Outlets	4
-------------	-----------------------	-------------------	---

---