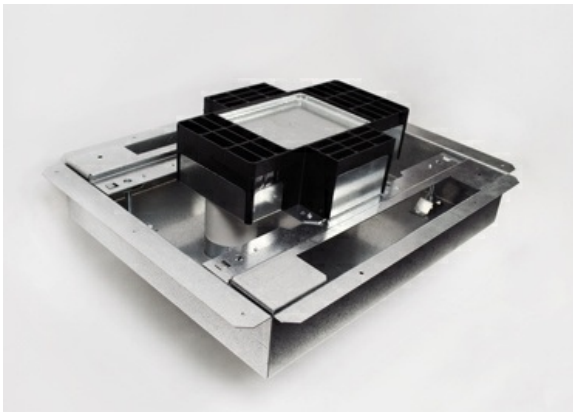




Wiremold
Discontinued - RFB4S-FC Resource RFB Series Fire Classified 4-Gang Floor Box
Part No. RFB4S-FC



Fire Classified 4-Compartment Box. Includes four duplex receptacle brackets. 12 3/4" L x 10" W x 3 7/16" D (324mm x 254mm x 87mm). Fully adjustable. Tunneling from adjacent or opposite compartments only, (not cross compartments). Tunneling can be set to feed all four compartments from one conduit in a single-service application. NOTE: For use in normal weight concrete floors with a minimum pour depth of 4 1/2" (114mm) over the crest of the deck. Floor Box spacing 2' on center and one for every 4 square feet in a span. Four (4) #12 AWG Type THHN Power Conductors or 48 #23 AWG (6 Cat. 6) Tele Data Conductors per gang. This box preserves the 2-hour fire rating of floors in which it has been installed.

Features & Benefits

Fire Classified 4-Compartment Box. Includes four duplex receptacle brackets. 12 3/4" L x 10" W x 3 7/16" D (324mm x 254mm x 87mm). Fully adjustable. Tunneling from adjacent or opposite compartments only, (not cross compartments). Tunneling can be set to feed all four compartments from one conduit in a single-service application. NOTE: For use in normal weight concrete floors with a minimum pour depth of 4 1/2" (114mm) over the crest of the deck. Floor Box spacing 2' on center and one for every 4 square feet in a span. Four (4) #12 AWG Type THHN Power Conductors or 48 #23 AWG (6 Cat. 6) Tele Data Conductors per gang. This box preserves the 2-hour fire rating of floors in which it has been installed.

Specifications

General Info

Product Line	Wiremold	UPC Number	786776183122
Country Of Origin	United States	Construction	Assembled
Application Sector	Commercial	Standard	cULus Listed Metallic Outlet Boxes: File E2961 Guide QCIT Meets Article 314.27(C) of NEC.
Type	Floor Box		

Dimensions

Cubic Capacity 115.1 cu in

Listing Agencies / 3rd Party Agencies

cULus ListingNumber	E2961	cULus Listed	Yes
---------------------	-------	--------------	-----

Buy American Act Compliance

NAFTA	Yes
-------	-----

Additional Information

RoHS Conformant	Yes
-----------------	-----

Technical Information

Cable Entry	conduit Feed Channels	Number of Outlets	8
-------------	-----------------------	-------------------	---
