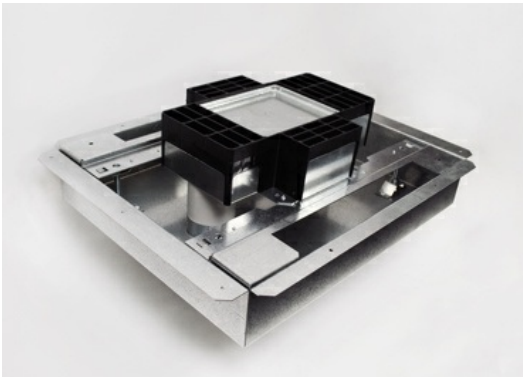




**Wiremold**  
**Discontinued - RFB4S-FC12 Resource RFB Series Fire Classified 4-Gang Floor Box**  
Part No. RFB4S-FC12



Fire Classified 4-Compartment Box. Includes four duplex receptacle brackets. 12 3/4" L x 10" W x 3 7/16" D (324mm x 254mm x 87mm). Fully adjustable. Tunneling from adjacent or opposite compartments only, (not cross compartments). Tunneling can be set to feed all four compartments from one conduit in a single-service application. NOTE: For use in normal weight concrete floors with a minimum pour depth of 4 1/2" (114mm) over the crest of the deck. Floor Box spacing 2' on center and one for every 4 square feet in a span. Four (4) #12 AWG Type THHN Power Conductors or 48 #23 AWG (6 Cat. 6) Tele Data Conductors per gang. This box preserves the 3-hour fire rating of floors in which it has been installed.

## Features & Benefits

Fire Classified 4-Compartment Box. Includes four duplex receptacle brackets. 12 3/4" L x 10" W x 3 7/16" D (324mm x 254mm x 87mm). Fully adjustable. Tunneling from adjacent or opposite compartments only, (not cross compartments).

Tunneling can be set to feed all four compartments from one conduit in a single-service application. NOTE: For use in normal weight concrete floors with a minimum pour depth of 4 1/2" (114mm) over the crest of the deck.

Floor Box spacing 2' on center and one for every 4 square feet in a span. Four (4) #12 AWG Type THHN Power Conductors or 48 #23 AWG (6 Cat. 6) Tele Data Conductors per gang.

This box preserves the 3-hour fire rating of floors in which it has been installed.

## Specifications

### General Info

Product Line	Wiremold	UPC Number	786776184228
Country Of Origin	United States	Construction	Assembled
Number of Knockouts	1	Application Sector	Commercial
Standard	cULus Listed Metallic Outlet Boxes: File E2961 Guide QCIT Meets Article 314.27(C) of NEC.	Type	Floor Box

### Dimensions

Product Weight US	33.0 lb	Cubic Capacity	22.5 in <sup>3</sup>
-------------------	---------	----------------	----------------------

### Listing Agencies / 3rd Party Agencies

cULus ListingNumber	E2961	cULus Listed	Yes
---------------------	-------	--------------	-----

### Additional Information

RoHS Compliant	Yes
----------------	-----

### Technical Information

Cable Entry	CONDUIT
-------------	---------

