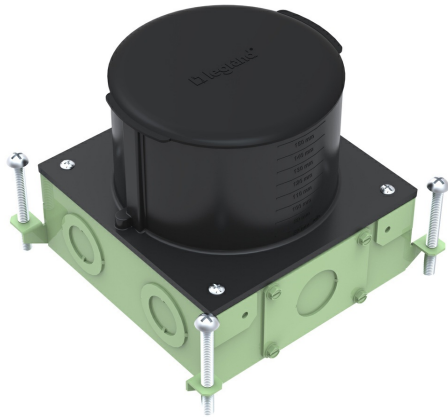




Wiremold
Ratchet-Pro Steel On-Grade Floor Box
 Part No. RPSFB-OG



Rectangular dual service metal concrete floor box with a nonmetallic top that allows for concrete pours between 4" thick to 6" thick. Graduated markings on the inside and outside of the box indicating volume capacity, as well as the depth of concrete pour. Box accepts 2HUB to allow 2" conduit feeds (sold separately) while maintaining a 4" deep concrete pour. Box includes: (1) Reusable concrete cap (2) Removable knockout plates to allow the 2HUB to be attached.

Features & Benefits

Ratchet adjusting ring. Allows for quick and easy installation without gluing, as well as removal of cover to activate at a future date for dual service*.

Multiple size conduit feeds. Conduit feed ranging from 3/4" trade size to 2" trade size openings to allow for more flexibility and capacity.

Slab-on-grade versions. Boxes offered in PVC and steel with a special fusion bonded epoxy corrosion resistant paint, enables the boxes to be installed in on-grade applications without the need for additional vapor barriers.

“Dead-Front” protection with the RP Series Covers. Slide covers snap back into place when receptacle is not in use to prevent dirt and debris from entering device.

10° of flexible adjustment allows cover to conform to the surface of the concrete pour, which significantly reduces labor costs

2" conduit hub. By using 2HUB with the RPSFB and RPSFB-OG floor boxes (sold separately) a greater capacity of preterminated cables can be brought in shallower concrete pours.

Streamlined design of divider. Labor savings from ease of cutting using a utility knife, no hacksaw or tape measure needed. Also allows for more room to splice wires.

Specifications

General Info

Product Line	Wiremold	UPC Number	786564081838
Country Of Origin	Mexico	Construction	Assembled
Number of Knockouts	14	Application Sector	Commercial, Education, Healthcare, Hospitality
Standard	cULus Listed Metallic Outlet Boxes: File E2961 Guide QCIT Meets Article 314.27(C) of NEC.	Warranty Type	1-Year from Installation or 2-Years from Day of Sale

Type	Floor Box
------	-----------

Dimensions

Product Width US	6.812 in
------------------	----------

Product Weight US	4.8 lb
-------------------	--------

Product Height US	6.1 in
-------------------	--------

Product Length US	7.0 in
-------------------	--------

Cubic Capacity	160 in ³
----------------	---------------------

Knockout Size	1-1/2 in, 1-1/4 in, 3/4 in
---------------	----------------------------

Listing Agencies / 3rd Party Agencies

cULus ListingNumber	E2961
---------------------	-------

cULus Listed	Yes
--------------	-----

Additional Information

RoHS Compliant	Yes
----------------	-----

Technical Information

Floor Type	Carpet, Concrete, Tile
------------	------------------------

Service Capacity	Dual
------------------	------

Minimum Floor Depth	4 in
---------------------	------

Box Capacity	2 Gangs
--------------	---------

Cable Entry	knockout
-------------	----------

Box Type	On-Grade
----------	----------

Depth Behind Device Plates	3.5 in
----------------------------	--------
