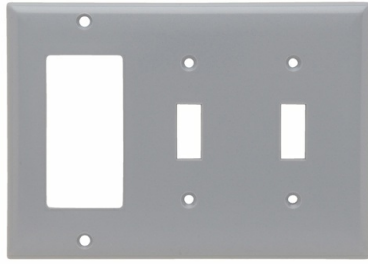


Combination Wall Plate, 2 Toggle Switch and 1 Decorator, 3-Gang



Features & Benefits

Molded of non-combustible mar-proof material.

Available in 'SP' series in Standard, Junior-Jumbo, and Jumbo sizes.

Seven standard colors available -- Ivory, White, Brown, Gray, Black, Red, and Light Almond.

Individually wrapped with color-matching screws.

Resistant to discoloration, grease, oil, solvent, and moisture.

Nominal thickness, .070 inch.

Specifications

General Info

Product Line	Pass & Seymour	Color	Gray
Finish	Matte	UPC Number	785007188424
Country Of Origin	Mexico	Features	Combination
Wall Plate Type	Combination, Decorator, Toggle Switch	Application Sector	Commercial, Residential
Standard	CSA, UL514	Warranty Type	Limited Lifetime Warranty
Type	Wall Plate		

Dimensions

Product Width US	6.375 in	Product Depth US	0.2 in
Product Height US	4.5 in		

Listing Agencies / 3rd Party Agencies

CSA Listed	Yes	CSA File Number	17695
------------	-----	-----------------	-------

Additional Information

Product Environmental Profile Yes

Technical Information

Cutout	Toggle and Decorator	Thickness	0.07 in
Number of Gangs	3	Wire Size	#14 - #10 AWG
Indoor/Outdoor	Indoor	Orientation	Horizontal
