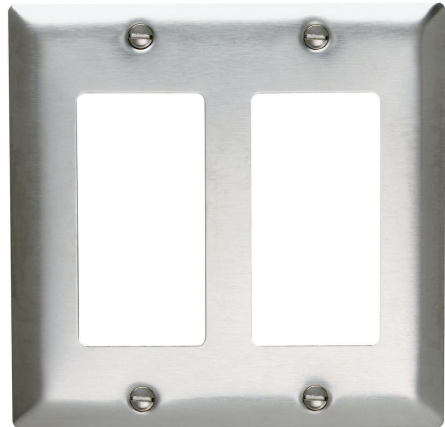




Pass and Seymour
Decorator Openings, Two Gang, 302/304 Stainless Steel
Part No. SS262



Smooth Metal Wall Plate 2-Gang Decorator 302/304 Stainless Steel

Features & Benefits

Type 302/304 Stainless Steel, non-magnetic: .032"^{nominal thickness}. Brushed finish.

This alloy contains 18% chromium and 8% nickel for superior resistance to corrosion.

Recommended for use in food processing plants, dairies, chemical plants, and other industrial, institutional, and commercial applications where corrosive atmospheres exist.

Standard, Jumbo, and Tandem plates available, as well as special Panel plates up to 5-gangs high and 10-gangs wide.

Packaged in protective film, with finish-matching screws.

Variety of special plated finishes.

Paintable to match plastic plates.

Can be silk-screened or engraved, and custom punched with over 300 opening styles.

Specifications

General Info

Product Line	Pass & Seymour	UPC Number	785007129533
Country Of Origin	United States	Application Sector	Residential/Commercial
Standard	UL 514		

Listing Agencies / 3rd Party Agencies

cULus Listed Yes

Technical Information

Cutout

Decorator

Thickness

0.032 in

Number of Gangs

2
