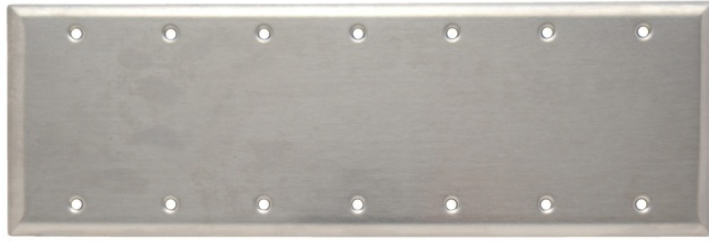


Blank Plate, Box Mounted, Seven Gang, 302/304 Stainless Steel



Features & Benefits

- Type 302/304 Stainless Steel, non-magnetic: .032" nominal thickness. Brushed finish.
- This alloy contains 18% chromium and 8% nickel for superior resistance to corrosion. Recommended for use in food processing plants, dairies, chemical plants, and other industrial, institutional, and commercial applications where corrosive atmospheres exist.
- Standard, Jumbo, and Tandem plates available, as well as special Panel plates up to 5-gangs high and 10-gangs wide. Packaged in protective film, with finish-matching screws.
- Variety of special plated finishes. Paintable to match plastic plates.
- Can be silk-screened or engraved, and custom punched with over 300 opening styles.

Specifications

General Info

Product Line	Pass & Seymour	Country Of Origin	United States
Application Sector	Residential/Commercial	Standard	CSA

Dimensions

Product Width US	13.62 in	Product Depth US	0.2 in
Product Height US	4.5 in		

Listing Agencies / 3rd Party Agencies

CSA Listed	Yes	cULus Listed	Yes
------------	-----	--------------	-----

Technical Information

Cutout	Blank	Thickness	0.032 in
Number of Gangs	7		