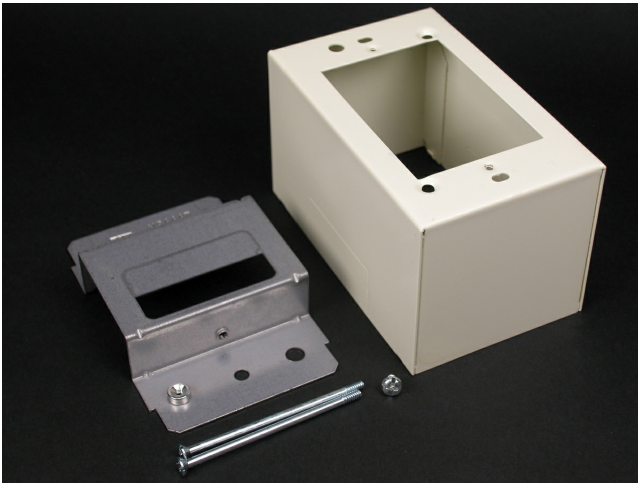




Wiremold
2400 Device Box Fitting
Part No. V2444D



One-gang, labor-saving, over-the-raceway box. Cover has twistout on each side for 2400 Series Raceway. Accepts industry standard faceplates for electrical and communication devices. NOTE: Accepts NEMA single-gang standard faceplates. Certified to Canadian Safety Standards for sale in Canada. When ordering this product for Canada, add "C" to the beginning of the part number to denote Canadian versions, i.e. "CV2444" or "C2444-FW".

Features & Benefits

One-gang, labor-saving, over-the-raceway box. Cover has twistout on each side for 2400 Series Raceway.

Accepts industry standard faceplates for electrical and communication devices. NOTE: Accepts NEMA single-gang standard faceplates. Certified to Canadian Safety Standards for sale in Canada.

When ordering this product for Canada, add "C" to the beginning of the part number to denote Canadian versions, i.e. "CV2444" or "C2444-FW".

Specifications

General Info

Product Line	Wiremold	Color	Ivory
UPC Number	786776548051	Country Of Origin	United States

Application Sector	Commercial, Residential	Standard	cULus Listed Raceway: File E4376 Guide RJBT. Fittings: File E41751 Guide RJPR. Base & Blank Cover: Meets Article 386 of NEC. Meets Section 12-600 of CEC.
--------------------	-------------------------	----------	---

Type Raceway

Dimensions

Product Width US	2.875 in	Product Weight US	0.8 lb
Product Depth US	2.75 in	Product Length US	4.625 in

Trade Programs

USMCA	Yes
-------	-----

Additional Information

RoHS Compliant	Yes	Product Environmental Profile	Yes
----------------	-----	-------------------------------	-----

Technical Information

Voltage	600.0 V
---------	---------
