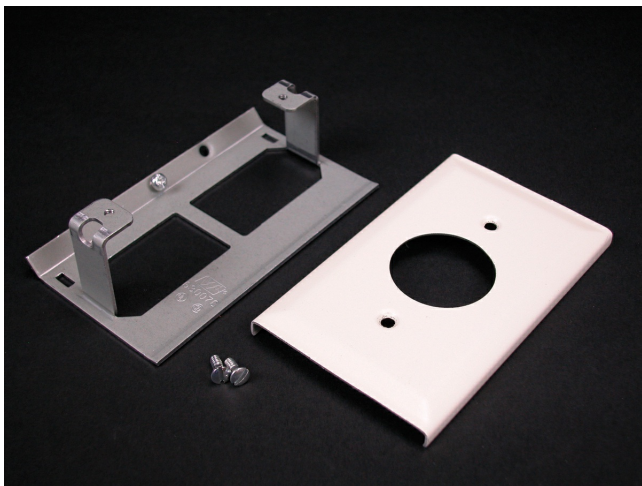




Wiremold  
3000 Single Receptacle Cover Fitting  
Part No. V3033JE



Installs commercially available straight blade and locking single receptacles with face diameters of 1.56" - 1.57" (approximately (40mm)) into 3000 Series Raceway. G3007C Device Bracket included. NOTE: Certified to Canadian Safety Standards for sale in Canada. When ordering these products, change the "V" color prefix to "CV" or the "G" color prefix to "CG" to denote the Canadian versions.

## Features & Benefits

Installs commercially available straight blade and locking single receptacles with face diameters of 1.56" - 1.57" (approximately (40mm)) into 3000 Series Raceway.

G3007C Device Bracket included. NOTE: Certified to Canadian Safety Standards for sale in Canada. When ordering these products, change the "V" color prefix to "CV" or the "G" color prefix to "CG" to denote the Canadian versions.

## Specifications

### General Info

|                    |              |                   |   |
|--------------------|--------------|-------------------|---|
| Product Line       | Wiremold     | Color             | Ivory   |
| UPC Number         | 786776105414 | Country Of Origin | United States   |
| Application Sector | Commercial   | Standard          | cULus Listed<br>Raceway:File E4376<br>Guide RJBT. Fittings: File E41751 Guide RJPR.<br>Base & Blank Cover:<br>Meets Article 386 of NEC.<br>Meets Section 12-600 of CEC. |
| Type               | Raceway      |                   |   |

### Dimensions

|                   |         |                   |        |
|-------------------|---------|-------------------|--------|
| Product Weight US | 0.36 lb | Product Length US | 4.5 in |
|-------------------|---------|-------------------|--------|

### Additional Information

RoHS Compliant

Yes

Product Environmental Profile

Yes

Technical Information

Voltage

600.0 V