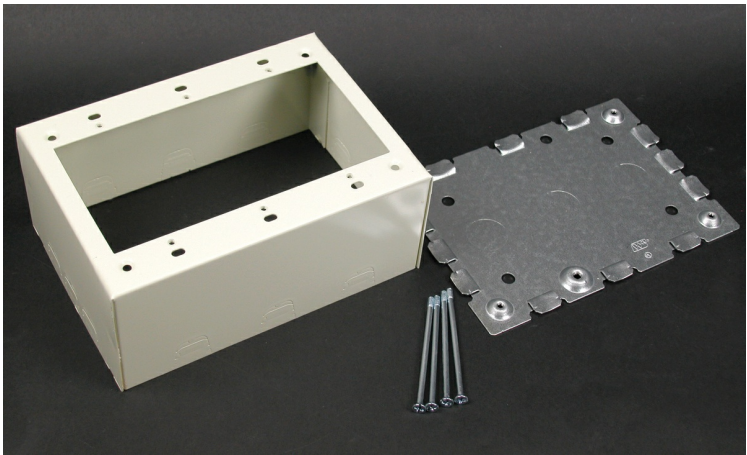




Wiremold  
500/700 Three-Gang Extra Deep Switch and Receptacle Box Fitting  
Part No. V5744-3



For deep devices such as momentary contact, remote control switches, and hospital signaling system devices. Base has 1/2" trade size KO's. Larger gang boxes available by special order. Three-gang: 4 5/8" L x 6 1/2" W (117mm x 165mm). NOTE: Certified to Canadian Safety Standards for sale in Canada. When ordering these products, change the "V" color prefix to "vc" or the "WH" color suffix to "WHC" to denote the Canadian versions.

Features & Benefits

For deep devices such as momentary contact, remote control switches, and hospital signaling system devices.	Base has 1/2" trade size KO's.
Larger gang boxes available by special order.	Three-gang: 4 5/8" L x 6 1/2" W (117mm x 165mm).
NOTE: Certified to Canadian Safety Standards for sale in Canada.	

Specifications

General Info

Product Line	Wiremold	Color	Ivory
UPC Number	786776039900	Country Of Origin	United States
Application Sector	Commercial, Residential	Standard	cULus Listed Raceway: File E4376 Guide RJBT. Fittings: File E4751 Guide RJPR. Meets Article 386 of NEC. Meets Section 12-1600 of CEC.
Type	Raceway		

Dimensions

Product Width US	6.5 in	Product Weight US	1.3 lb
Product Depth US	2.75 in	Product Length US	4.625 in

Trade Programs

USMCA	Yes
-------	-----

---

Additional Information

---

RoHS Compliant	Yes	Product Environmental Profile	Yes
----------------	-----	-------------------------------	-----

---

Technical Information

---

Voltage	600.0 V
---------	---------

---