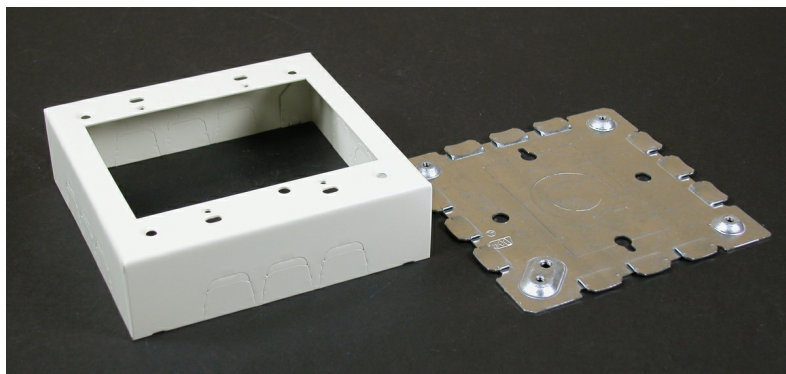




Wiremold
Wiremold 500/700 Series Two-Gang Switch and Receptacle Box Fitting, Ivory
Part No. V5748-2



Wiremold 500 Series and 700 Series raceways are ideal for surface mounting small amounts of electrical wiring or communication cables. These rugged raceways offer a low profile appearance which blend with any decor. Available in our exclusive ScuffCoat finish.

Features & Benefits

This product meets the material restrictions of RoHS

Specifications

General Info

Product Line	Wiremold	Color	Ivory
UPC Number	786776070576	Country Of Origin	United States
Application Sector	Commercial	Standard	cULus Listed Surface Metal Raceway: File E41751: Guide RJPR
Type	Raceway		

Dimensions

Product Width US	4.88 in	Product Weight US	0.8 lb
Product Volume US	44.77 cu in	Product Depth US	1.88 in
Product Height US	4.88 in		

Additional Information

RoHS Compliant	Yes	Product Environmental Profile	Yes
----------------	-----	-------------------------------	-----