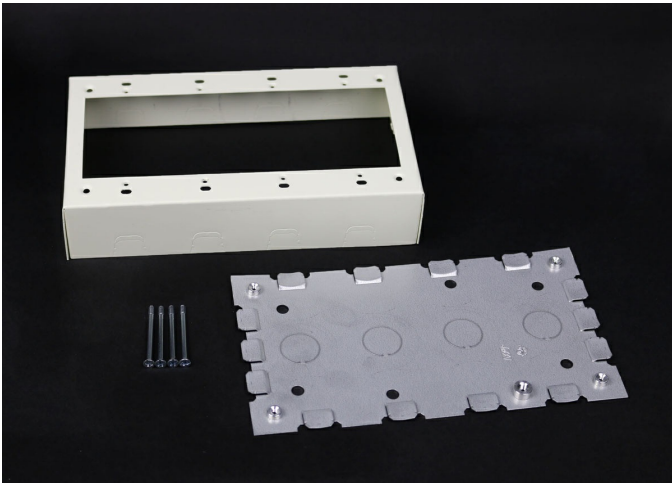




Wiremold
500/700 Four-Gang Switch and Receptacle Box Fitting
Part No. V5748-4



For deep switches and receptacles. Base has two 1/2" trade size KO's. Larger gang boxes available by special order. Four-gang: 4 5/8" L x 8 11/32" W (117mm x 212mm). NOTE: Certified to Canadian Safety Standards for sale in Canada. When ordering these products, change the "V" color prefix to "VC" to denote the Canadian versions.

Features & Benefits

For deep switches and receptacles. Base has two 1/2" trade size KO's. Larger gang boxes available by special order. Four-gang: 4 5/8" L x 8 11/32" W (117mm x 212mm). NOTE: Certified to Canadian Safety Standards for sale in Canada. When ordering these products, change the "V" color prefix to "VC" to denote the Canadian versions.

Specifications

General Info

Product Line	Wiremold	UPC Number	786776039955
Country Of Origin	United States	Application Sector	Residential/Commercial
Standard	cULus Listed Raceway: File E4376 Guide RJBT. Fittings: File E41751 Guide RJPR. Meets Article 386 of NEC. Meets Section 12-1600 of CEC.	Type	Raceway

Dimensions

Product Width US	8.344 in	Product Depth US	1.75 in
Product Length US	4.625 in		

Buy American Act Compliance

NAFTA	Yes
-------	-----

Additional Information

RoHS Conformant Yes

Product Environmental Profile Yes

Technical Information

Voltage 600.0 V
