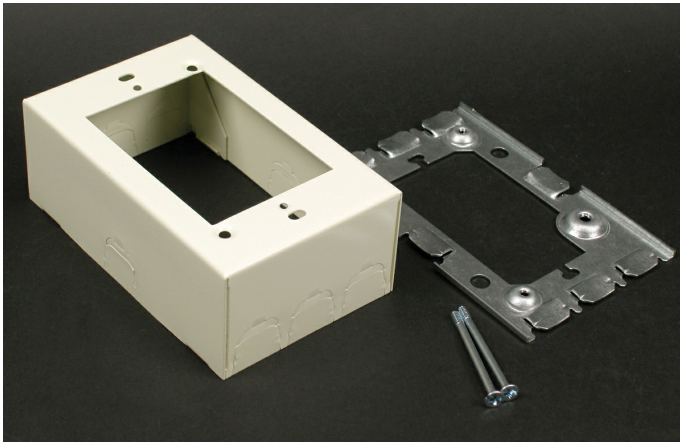




**Wiremold**  
**Wiremold 500/700 Series Deep Flush Type Extension Adapter Fitting, Ivory**  
Part No. V5751A



Wiremold 500 Series and 700 Series raceways are ideal for surface mounting small amounts of electrical wiring or communication cables. These rugged raceways offer a low profile appearance which blend with any decor. Available in our exclusive ScuffCoat finish.

## Features & Benefits

This product meets the material restrictions of RoHS

## Specifications

### General Info

Product Line	Wiremold	Color	Ivory
UPC Number	786776577570	Country Of Origin	United States
Application Sector	Commercial	Standard	cULus Listed Surface Metal Raceway: File E41751: Guide RJPR
Type	Raceway		

### Dimensions

Product Width US	4.75 in	Product Weight US	0.6 lb
Product Volume US	26.79 cu in	Product Depth US	1.88 in
Product Height US	3.0 in		

### Trade Programs

USMCA	Yes		
-------	-----	--	--

### Additional Information

RoHS Compliant	Yes	Product Environmental Profile	Yes
----------------	-----	-------------------------------	-----