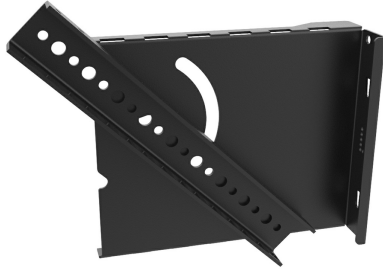




Ortronics
4RU Pivoting Rail Kit for Vertical Wall-Mount Cabinet
Part No. VWM-PIV-4RU



Vertical Wall-Mount pivoting 4RU adjustable mounting rail kit. 2RU mounts into both 4RU and 8RU frames. The mounting rails are perfect for patch panels using 10-32 hardware, or can be reversed to mount using cage nuts in any thread size.

Features & Benefits

Designed for Patching

The pivoting rail is intended for mounting up to 4RU's of patch panels

Adjustable Rails

Allows for pivoting of Standard EIA 19" rails for easy access to rear of mounted patch panel

Specifications

General Info

Product Line	Ortronics	UPC Number	662875011033
Country Of Origin	United States	Application Sector	Commercial
Type	Enclosure		

Additional Information

RoHS Conformant	Yes
-----------------	-----