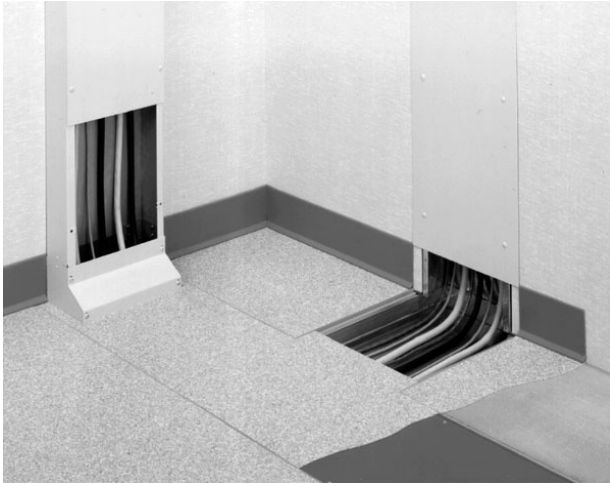




Wiremold
WD 6IND STL FLUSH ACCESS CPLT
Part No. WD06-ACPF



Wallduct is commonly used in the healthcare market to feed wires and cables from electric and communication cabinets to X-ray and MRI equipment. See typical application shown. Because some healthcare equipment requires nonmetallic material in the surrounding area, aluminum Wallduct is used in scan rooms. The equipment and control rooms generally use steel Wallduct.

Specifications

General Info

| | | | |
|-------------------|---------------|------------|--------------|
| Product Line | Wiremold | UPC Number | 786564000075 |
| Country Of Origin | United States | | |

Listing Agencies / 3rd Party Agencies

| | | | |
|---------------------|-------|--------------|-----|
| cULus ListingNumber | E4376 | cULus Listed | Yes |
|---------------------|-------|--------------|-----|

Additional Information

| | |
|-----------------|-----|
| RoHS Conformant | Yes |
|-----------------|-----|