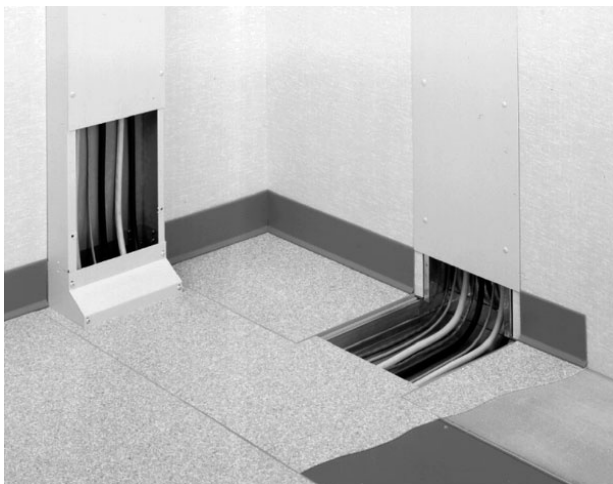




Wiremold
WD 6INW 31/2IND STL 45DEG INT ELB
Part No. WD06W350-IL45



Wallduct is commonly used in the healthcare market to feed wires and cables from electric and communication cabinets to X-ray and MRI equipment. See typical application shown. Because some healthcare equipment requires nonmetallic material in the surrounding area, aluminum Wallduct is used in scan rooms. The equipment and control rooms generally use steel Wallduct.

Specifications

General Info

Product Line	Wiremold	Country Of Origin	United States
--------------	----------	-------------------	---------------

Dimensions

Product Width US	6.0 in	Product Depth US	3.5 in
------------------	--------	------------------	--------

Listing Agencies / 3rd Party Agencies

cULus ListingNumber	E41751	cULus Listed	Yes
---------------------	--------	--------------	-----

Buy American Act Compliance

NAFTA	Yes
-------	-----

Additional Information

RoHS Conformant	Yes
-----------------	-----