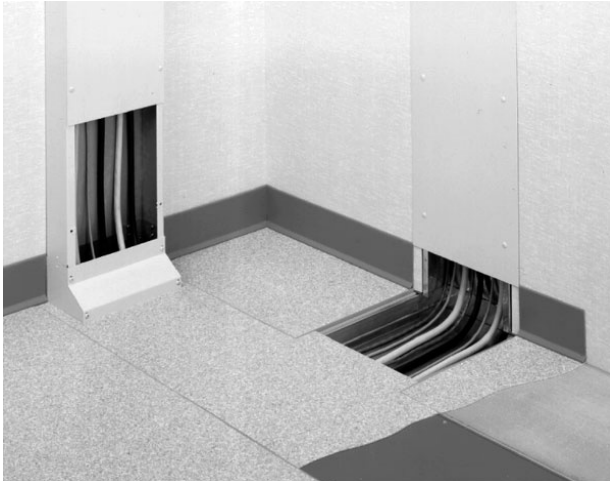




Wiremold  
WD 6INW 31/2IND STL L HAND T TUNL  
Part No. WD06W350-LTUN



Wallduct is commonly used in the healthcare market to feed wires and cables from electric and communication cabinets to X-ray and MRI equipment. See typical application shown. Because some healthcare equipment requires nonmetallic material in the surrounding area, aluminum Wallduct is used in scan rooms. The equipment and control rooms generally use steel Wallduct.

## Specifications

### General Info

Product Line Wiremold

### Dimensions

Product Width US 6.0 in Product Depth US 3.5 in

### Listing Agencies / 3rd Party Agencies

cULus ListingNumber E41751 cULus Listed Yes

### Additional Information

RoHS Compliant Yes