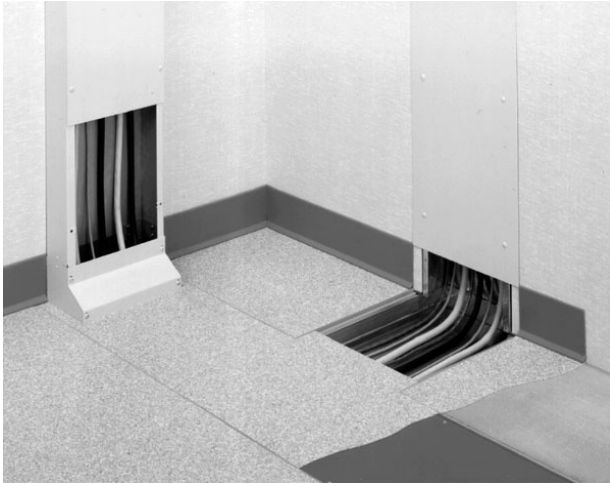




Wiremold
WD 6INW 31/2IND STL STRAIGHT T TUNL
Part No. WD06W350TUN



Wallduct is commonly used in the healthcare market to feed wires and cables from electric and communication cabinets to X-ray and MRI equipment. See typical application shown. Because some healthcare equipment requires nonmetallic material in the surrounding area, aluminum Wallduct is used in scan rooms. The equipment and control rooms generally use steel Wallduct.

Specifications

General Info

Product Line	Wiremold	Country Of Origin	United States
--------------	----------	-------------------	---------------

Listing Agencies / 3rd Party Agencies

cULus ListingNumber	E41751	cULus Listed	Yes
---------------------	--------	--------------	-----

Additional Information

RoHS Conformant	Yes
-----------------	-----
