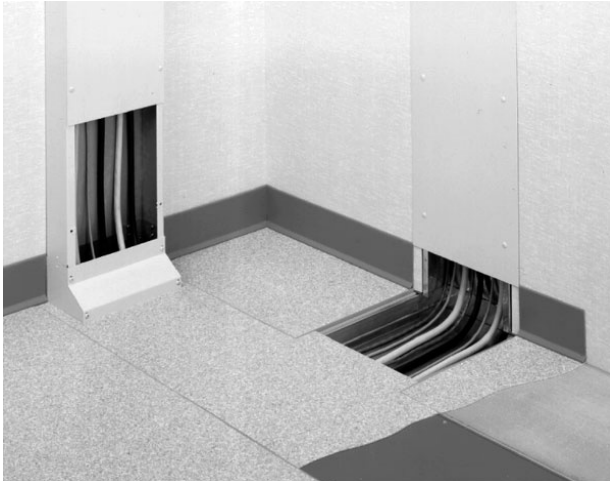




Wiremold
WD 10INW 31/2IND 60INL STL BODY
Part No. WD10W350-60



Wallduct Raceway Systems are high capacity raceways for use in walls or ceilings. They can be mounted to the wall surface or flush with the wall to meet equipment layout and room designs. The lay-in feature for enclosure of wire and cable is ideal for use in healthcare rooms, under raised floors, or as a large capacity feeder for perimeter raceway. The cover plates are easily removed for wire and cable access. Wallduct Raceway Systems can also be used with Trenchduct to carry wire and cables from cabinets to egress points anywhere on the floor or wall. Wallduct Raceway Systems are also available in aluminum for applications that require nonferrous metal raceways such as X-ray and MRI scan rooms.

Specifications

General Info

Product Line	Wiremold	UPC Number	786564149866
Country Of Origin	United States	Application Sector	Commercial
Standard	cULus Listed Surface Metal Raceway Fittings: File E4376 Guide RJBT	Type	Wallduct

Dimensions

Product Width US	10.0 in	Product Depth US	3.5 in
------------------	---------	------------------	--------

Listing Agencies / 3rd Party Agencies

cULus ListingNumber	E4376	cULus Listed	Yes
---------------------	-------	--------------	-----

Additional Information

RoHS Compliant	Yes
----------------	-----