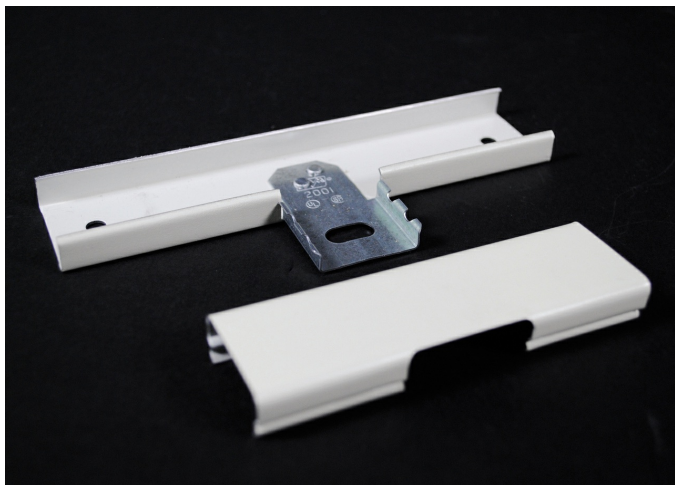




Wiremold  
STL TEE 2000 WHITE  
Part No. WH2015



Plugmold® Multioutlet Systems are available in a wide variety of lengths and fittings and in a variety of finishes to provide versatile solutions for many applications. Plugmold options include single or alternating circuits, standard or isolated ground receptacles, GFCI protection, tamper-resistant protection, USB charging, Snapicoil® harnesses of prewired receptacles, and cord-ended units. Plugmold® Multioutlet Systems are available in black or ivory ScuffCoat™ finish, painted white or gray enamel steel, stylish stainless steel, anodized aluminum and durable textured ivory nonmetallic. The painted steel product works with many types of decor and is paintable to integrate with most color schemes. Durable stainless steel and anodized aluminum Plugmold products are corrosion-resistant, making them ideal for labs.

## Features & Benefits

For branches at right angles. Couplings furnished.

## Specifications

### General Info

Product Line	Wiremold	Color	White
UPC Number	786776142280	Country Of Origin	United States
Product Series	2000 Series	Application Sector	Commercial, Education, Entertainment, Healthcare, Hospitality, Retail
Standard	Fittings: File E41751	Warranty Type	1-Year from Installation or 2-Years from Day of Sale
Type	Fitting		

### Dimensions

Product Weight US	0.34 lb
-------------------	---------

### Listing Agencies / 3rd Party Agencies

cULus ListingNumber	E41751	cULus Listed	Yes
---------------------	--------	--------------	-----

---

Trade Programs

---

USMCA	Yes
-------	-----

---

Additional Information

---

RoHS Compliant	Yes
----------------	-----

---

Technical Information

---

Indoor/Outdoor	Indoor	Mounting Type	On Surface
Voltage	300.0 V	Environmental Conditions	Dry interior locations

---