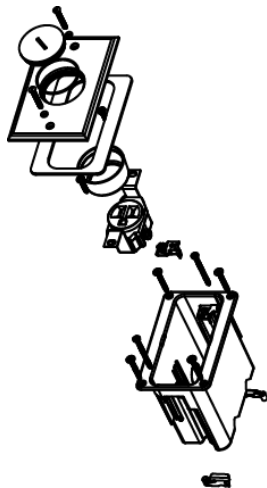




Wiremold
WMFB1SRB Series Single-Gang Floor Box Assembly
Part No. WMFB1SRB



Includes single-gang box, one 15A tamper-resistant receptacle, and brass cover with one screw plug. For hole cut dimensions, see installation instructions sheet. Box Dimensions: 2 1/8" W x 3 3/4" L x 3 7/8" D (54mm W x 95mm L x 98mm D) Device Plate: 3 1/8" W x 4 15/16" L (79mm W x 125mm L).

Features & Benefits

Includes single-gang box, one 15A tamper-resistant receptacle, and brass cover with one screw plug. For hole cut dimensions, see installation instructions sheet. Box Dimensions: 2 1/8" W x 3 3/4" L x 3 7/8" D (54mm W x 95mm L x 98mm D) Device Plate: 3 1/8" W x 4 15/16" L (79mm W x 125mm L).

Specifications

General Info

Product Line	Wiremold	UPC Number	786564053927
Country Of Origin	China	Construction	Not Assembled
Application Sector	Residential/Commercial	Standard	cULus Listed Nonmetallic Outlet Boxes: File E143222 Guide QCMZ. Meets Article 314.27(C) of NEC.
Type	Floor Box		

Dimensions

Product Width US	2.125 in	Product Depth US	3.875 in
------------------	----------	------------------	----------

Listing Agencies / 3rd Party Agencies

cULus Listed	Yes
--------------	-----

Additional Information

RoHS Conformant	Yes
-----------------	-----

Technical Information

Cable Entry	Through Floor	Number of Outlets	1
-------------	---------------	-------------------	---
