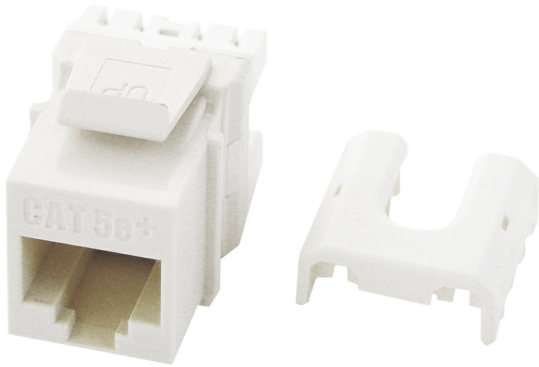




On-Q
Cat 5e Quick Connect RJ45 Keystone Insert, White
Part No. WP3475WH

Quick Connect RJ45 Cat 5e T568 A/B Keystone Insert



Features & Benefits

ETL Verified to Category 5e component standard: Ensures standards compliance

Exceeds EIA/TIA 568A/B Cat 5e Performance Specifications

Contractor packs available in quantities of 50. To order, use part number WP3475-LA-50

RJ45 Inserts can be terminated with any 110 punchdown tool

Available in Black, Brown, White, Light Almond, Grey, Blue, Orange, Ivory and Red

Specifications

General Info

Product Line	On-Q	Color	White
UPC Number	804428036715	Country Of Origin	Taiwan, Province Of China
Package Quantity	1	Application Sector	Residential
Standard	UL (UL/ANSI 1863), CSA (CAN/CSA-C22.2 No. 182.4-1990), IEEE 802.3an 10GBase-T, TIA 568-B.2-10, RoHS		

Technical Information

Termination Style	Punchdown	Cable Type	Cat 5e
Environmental Conditions	0 to 93 (relative humidity, non-condensing) pct		