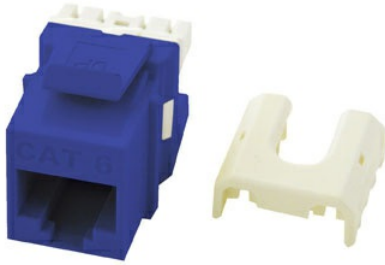




On-Q  
Cat 6 Quick Connect RJ45 Keystone Insert, Blue  
Part No. WP3476BE

Quick Connect RJ45 Cat 6 T568 A/B Keystone Insert



## Features & Benefits

Recessed hex nut does not allow for jack rotation

RJ45 Inserts can be terminated with any 110 punchdown tool

Exceeds EIA/TIA 568A/B Cat 6 Performance Specifications Available in Black, Brown, White, Light Almond, Grey, Blue, Orange

Available in contractor packs

## Specifications

### General Info

Product Line	On-Q	Color	Blue
UPC Number	804428036722	Country Of Origin	Taiwan, Province Of China
Features	Quick Connect Compatible	Package Quantity	1
Application Sector	Residential	Standard	UL (UL/ANSI 1863), CSA (CAN/CSA-C22.2 No. 182.4-1990), IEEE 802.3an 10GBase-T, TIA 568-B.2-10, RoHS

### Technical Information

Termination Style	Punchdown	Cable Type	Cat 6
Environmental Conditions	0 to 93% (relative humidity, non-condensing)		