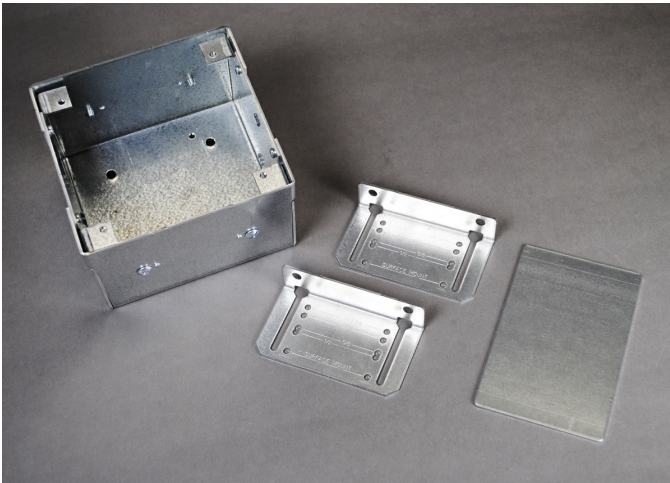




Wiremold  
WallSource 2-Gang Box, Divider and Mounting Brackets  
Part No. WSB42-2



Slide-in dividers separate the box for power and communication services. Adjustable mounting brackets offer flexibility to flush mount box in 1/2", 5/8", 1", and 1 1/4" (12.7mm, 15.9mm, 25mm, and 32mm) wall thicknesses. Ordering Data: 4 3/4" L x 5" W x 3 1/4" D (121mm L x 127mm W x 83mm D), 2-Gang, 1/2", 3/4", and 1" trade size KOs. NOTE: Certified to Canadian Safety Standards, for sale in Canada. When ordering, add "C" suffix to part number to denote the Canadian version, i.e., "WSB42-2C".

## Features & Benefits

Slide-in dividers separate the box for power and communication services. Adjustable mounting brackets offer flexibility to flush mount box in 1/2", 5/8", 1", and 1 1/4" (12.7mm, 15.9mm, 25mm, and 32mm) wall thicknesses. Ordering Data: 4 3/4" L x 5" W x 3 1/4" D (121mm L x 127mm W x 83mm D), 2-Gang, 1/2", 3/4", and 1" trade size KOs. NOTE: Certified to Canadian Safety Standards, for sale in Canada. When ordering, add "C" suffix to part number to denote the Canadian version, i.e., "WSB42-2C".

## Specifications

### General Info

Product Line	Wiremold	UPC Number	786776549027
Country Of Origin	United States	Application Sector	Residential/Commercial
Standard	cULus Listed Metallic Outlet Box:File E2961 Guide QCIT.Meets Article 314 of NEC.	Type	Raceway

### Dimensions

Product Width US	5.0 in	Product Depth US	3.25 in
Product Length US	4.75 in		

### Buy American Act Compliance

NAFTA	Yes
-------	-----

### Additional Information

---

RoHS Conformant    Yes

---

**Technical Information**

---

Voltage                    600.0 V

---