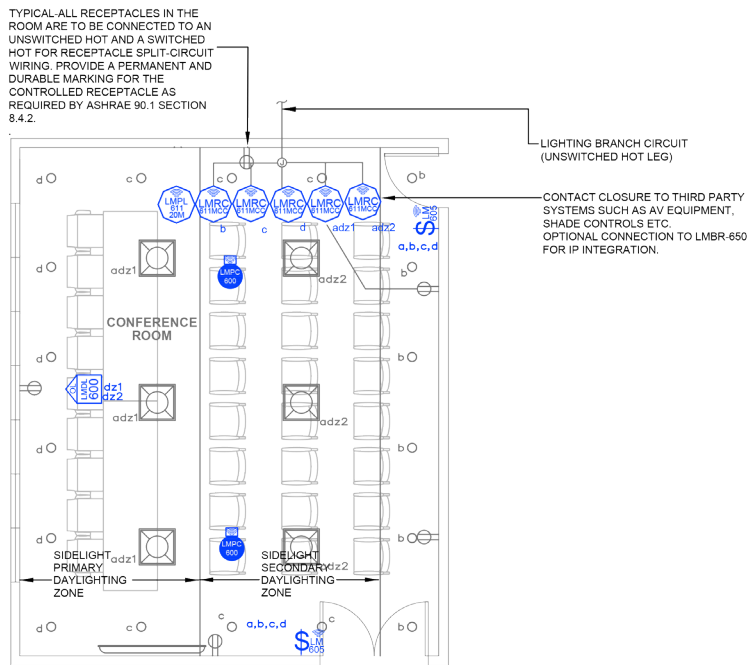


# Conference Room

## Dimming with Wireless DLM Product



Component



Wired



Wireless

### SEQUENCE OF OPERATIONS

- General lighting (a, adz1, adz2) auto On to 50% and controlled receptacles auto On when occupancy detected.
- Manual On/Off/Dim general lighting (a, adz1, adz2) and down lighting (b, c, d) with scene switches.
- Scene settings
  - General Lighting (a, adz1) 100%, (b) 0%, (c) 0%, (d) 0%
  - Projection (a, adz1) 0%, (b) 75%, (c) 50%, (d) 0%
  - Conferencing (a, adz1) 50%, (b) 50%, (c) 25%, (d) 50%
  - All Off (a, adz1) 0%, (b) 0%, (c) 0%, (d) 0%
- Lighting in primary (adz1) and secondary (adz2) daylight zones will continuously dim based on daylight contribution to maintain at least 35FC at task level.
- Auto off all lighting, controlled receptacles, A/V systems within 20 minutes of occupants leaving.

### DESIGN CONSIDERATIONS

- Time scheduling, demand response and remote programming/diagnostic functions are enabled with installation of the LMBC-300 Network Bridge for system connectivity.
- To integrate occupancy detection control with the HVAC System, use a LMRL-100 Isolated Relay Interface.
- System Configuration Tools:
  - Standalone rooms use the configuration application (Apple or Android)
  - Networked rooms (with the LMBR-650) can be configured using LMCS-100.

### BILL OF MATERIALS

LMRC-611MCC (5)	Wireless 1-Relay Room Controller, 0-10V Dimming Metering, Contact Closure
LMPC-600 (2)	Wireless Ceiling Mount Occupancy Sensor, Extended Lens
LMSW-605 (2)	Wireless Digital 5-Button Scene Switch
LMDL-600 (1)	Wireless Photosensor, Open Loop
LMPL-611-20M (1)	Wireless 1 Relay Plug Load Controller, Metering
Optional:	LMPC-600-RPM, Recessed Plenum Mounting Kit
Optional:	LMDL-600-RPM, Recessed Plenum Mounting Kit

### CODE REQUIREMENTS

9.4.1.1(a)	Local Control Device
9.4.1.1(b, c)	Manual On / Partial Auto On
9.4.1.1(d)	Bi-level Control
9.4.1.1(e)	Auto Daylight Responsive
9.4.1.1(h)	Auto Full Off
8.4.2	Auto Receptacle Control