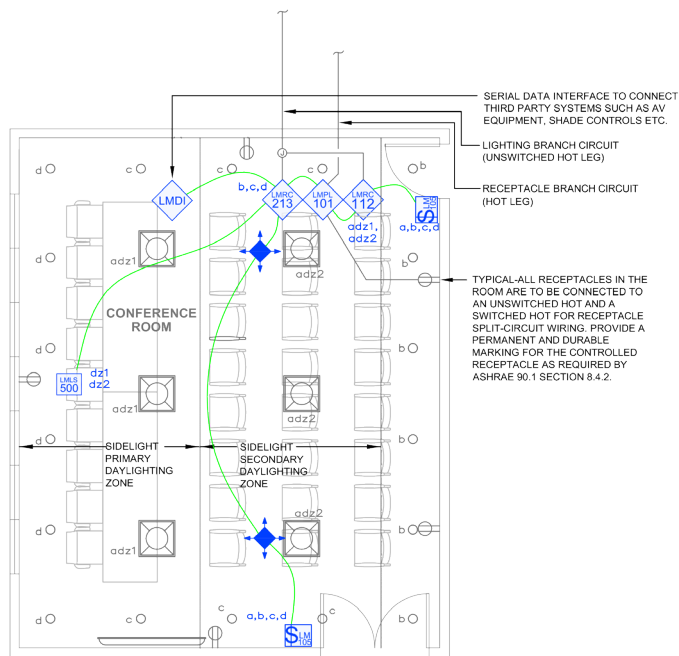


# Conference Room

Dimming with Wired DLM product



Component



Wired



Wireless

## SEQUENCE OF OPERATIONS

- General lighting (a, adz1, adz2) auto On to 50% and controlled receptacles auto On when occupancy detected.
- Manual On/Off/Dim general lighting (a, adz1, adz2) and down lighting (b, c, d) with scene switches.
- Scene settings
  - General Lighting (a, adz1, adz2) 100% (b) 0% (c) 0% (d) 0%
  - Projection (a, adz1, adz2) 0% (b) 75% (c) 50% (d) 0%
  - Conferencing (a, adz1, adz2) 50% (b) 50% (c) 25% (d) 50%
  - All Off (a, adz1, adz2) 0% (b) 0% (c) 0% (d) 0%
- Lighting in primary (adz1) and secondary (adz2) daylight zones will continuously dim based on daylight contribution to maintain at least 35FC at task level.
- Auto off all lighting, controlled receptacles, A/V systems within 20 minutes of occupants leaving.

## DESIGN CONSIDERATIONS

- Receptacle control can be designed using either an RF transmitter with receptacle RF receivers, or can be hardwired to receptacles using an LMPL-101 Plug Load Room Controller.
- Time scheduling, demand response and remote programming/diagnostic functions are enabled with installation of the LMBC-300 Network Bridge for system connectivity.
- To integrate occupancy detection control with the HVAC System, use a LMRL-100 Isolated Relay Interface.

## BILL OF MATERIALS

LMRC-213 (1)	3-Relay Room Controller, 0-10V Dimming
LMRC-112 (1)	2-Relay Room Controller, 0-10V Dimming
LMDC-100 (2)	Ceiling Mount Dual Tech Occupancy Sensor
LMSW-105 (2)	5-Button Scene Switch
LMLS-500 (1)	Photosensor, Open Loop
LMPL-101 (1)	Plug Load Room Controller
LMDI-100 (1)	Serial Data (A/V) Interface
LMRJ	Pre-Terminated Cable

## CODE REQUIREMENTS

9.4.1.1(a)	Local Control Device
9.4.1.1(b, c)	Manual On / Partial Auto On
9.4.1.1(d)	Bi-level Control
9.4.1.1(e)	Auto Daylight Responsive
9.4.1.1(h)	Auto Full Off
8.4.2	Auto Receptacle Control