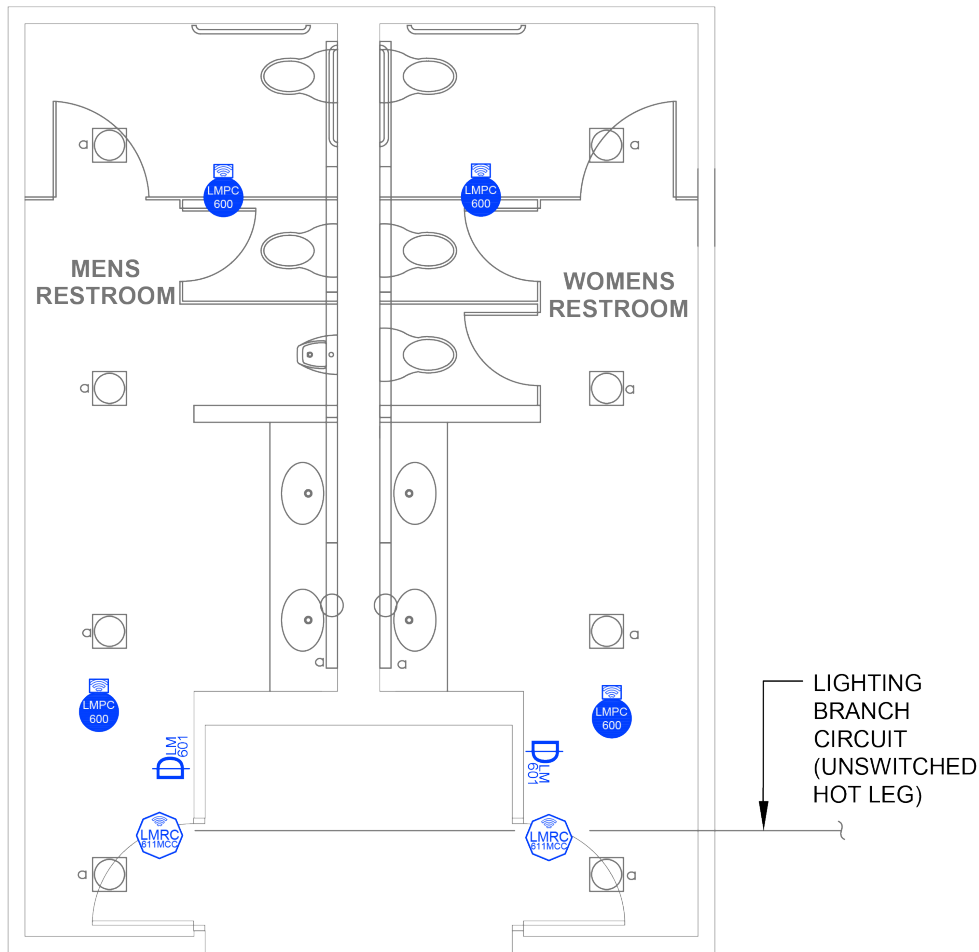


Multi-Stall Restroom

Dimming with Wireless DLM Product



Component



Wired



Wireless

SEQUENCE OF OPERATIONS

1. For each restroom independently, lighting auto On to 100% and exhaust fan auto on when occupancy detected.
2. Manual On/Off with local control switch.
3. Auto off all lighting and exhaust fans for each restroom independently within 20 minutes of occupants leaving.

DESIGN CONSIDERATIONS

- Time scheduling and remote programming functions are enabled by connectivity to a LMBR-650 Border Router.
- To integrate occupancy detection control with the HVAC system, use contact outputs on the LMRC-611MCC.
- System Configuration Tools:
 - Standalone rooms use the configuration application (Apple or Android)
 - Networked rooms (with the LMBR-650) can be configured using LMCS-100.

BILL OF MATERIALS

LMRC-611MCC (2)	Wireless 1-Relay Room Controller, 0-10V Dimming Metering, Contact Closure
LMPC-600 (4)	Wireless PIR Ceiling Occupancy Sensor, Extended Lens
LMDM-601 (2)	Wireless 1-Button Dimming Switch
Optional:	LMPC-600-RPM, Recessed Plenum Mounting Kit

CODE REQUIREMENTS

9.4.1.1(a)	Local Control Device
9.4.1.1(h)	Auto Full Off
6.4.3.4.4	Ventilation Fan Controls