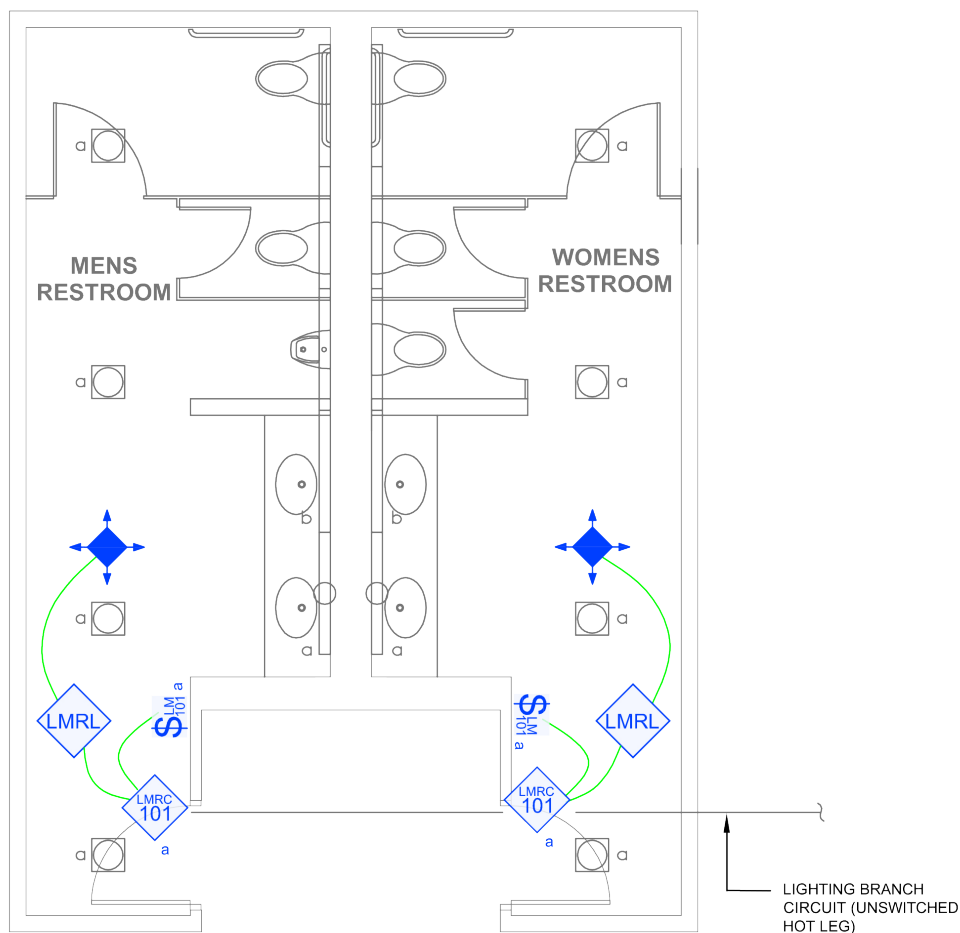


Multi-Stall Restroom

Dimming with Wired DLM product



Component



Wired



Wireless

SEQUENCE OF OPERATIONS

1. For each restroom independently, lighting auto On to 100% and exhaust fan auto on when occupancy detected.
2. Manual On/Off with local control switch.
3. Auto off all lighting and exhaust fans for each restroom independently within 20 minutes of occupants leaving.

DESIGN CONSIDERATIONS

- It is important that each restroom (men and women) operate independently and be isolated for correct auto configuration and operation of each independent exhaust fan.
- Time scheduling, demand response and remote programming/diagnostic functions are enabled with installation of the LMBC-300 Network Bridge for system connectivity.

BILL OF MATERIALS

LMRC-101 (2)	1-Relay Room Controller
LMDC-100 (2)	Ceiling Mount Dual Tech Occupancy Sensor
LMSW-101 (2)	1-Button Digital Wall Switch
LMRL-100 (2)	Isolated Relay Interface
LMRJ	Pre-Terminated Cable

CODE REQUIREMENTS

9.4.1.1(a)	Local Control Device
9.4.1.1(h)	Auto Full Off
6.4.3.4.4	Ventilation Fan Controls